

Instructions for Using Wi-Fi Service

Windows 10, Mac OS

This document instruct you how to connect to the campus network (Sophia University network). When you connect to the network, specific settings are required. The settings can be different from ordinary home network settings.

March 2019

ICT Office

Contents

1. Specifications	3
2. How to connect to Sophiawifi2019.....	4
2.1. Instructions for Windows10 (remove previous settings).....	4
2.2. Instructions for Windows 10 (set up Sophiawifi2019).....	5
2.3. Instructions for Mac OS.....	10
3. Services	12

OICT Office changed Wi-Fi settings at April, 2019.

Once Wi-Fi setting is completed, you can connect to Sophiawifi at any Wi-Fi spot in this university.

Setting for new Wi-Fi is a little complicated from previous one. **However, once the setting is completed, you can connect to the internet without regular authorization procedure.** *

*The authorization will be expired automatically when you graduate/retire/leave this university.

Caution:

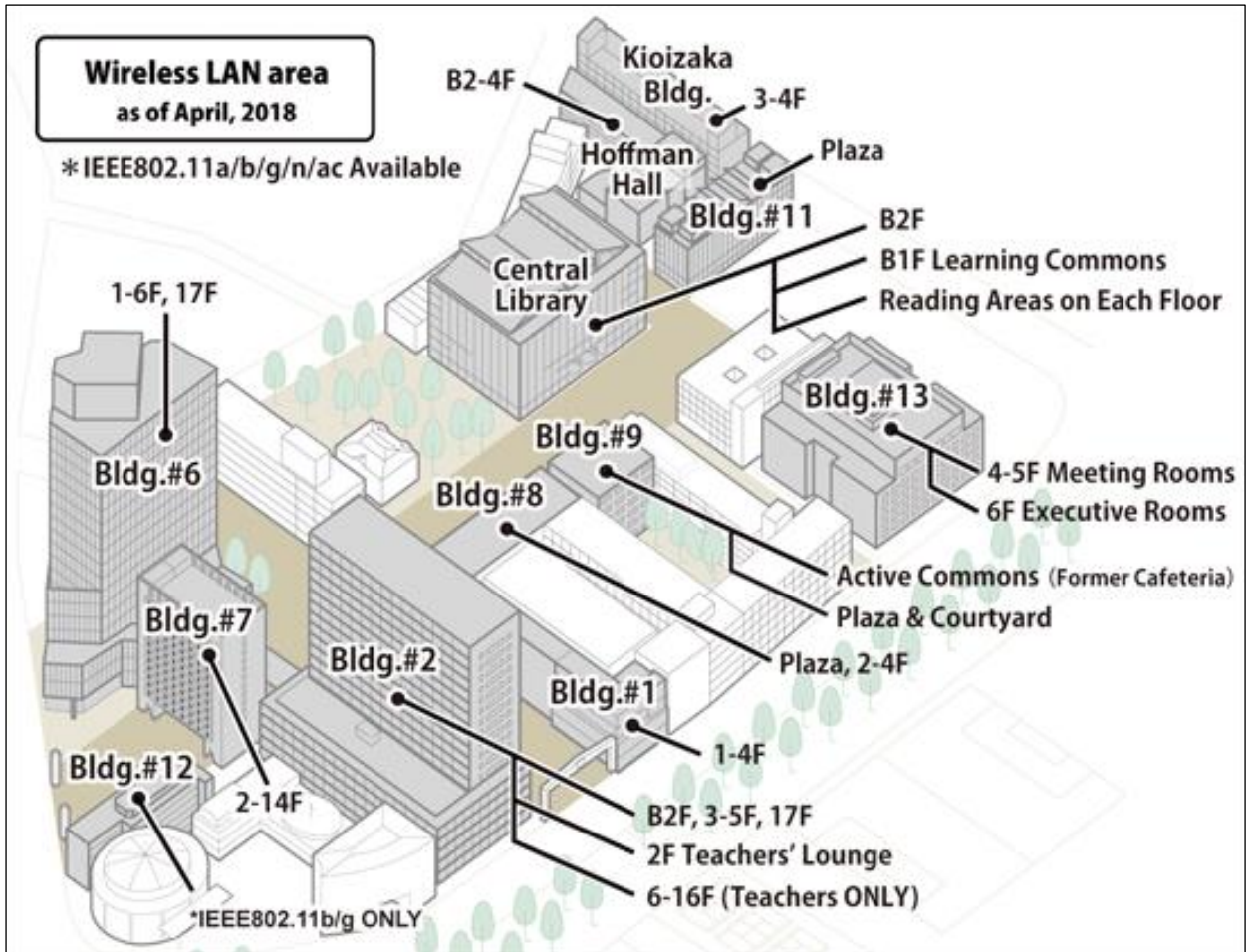
Make sure to follow this instructions or **connection will be failed afterward**. Especially if you use Windows OS, the setting will be completed unintentionally.

When you failed the setting, surely remove the previous setting and try it again.

1. Specifications

(1) Wi-Fi Coverage (as of April 2018)

※You can get latest information from Sophia University ICT-Office website.



(2) Available Time

The Wi-Fi is available all day except during irregular maintenance.

(3) Eligibility Teachers/Faculty Staffs/Students who have Sophia University ICT account.

(4) Supported OS Windows 10, 8.1, 7, Mac OS, Android, iOS etc.

Available Services Web Browsing, E-mail, SSH, SFTP

(5) Notice

- ① You have to setup PC for connecting the network for yourself.
- ② Beware of computer virus. When you connect to the network, surely install anti-virus software and download latest databases. Also, update OS.

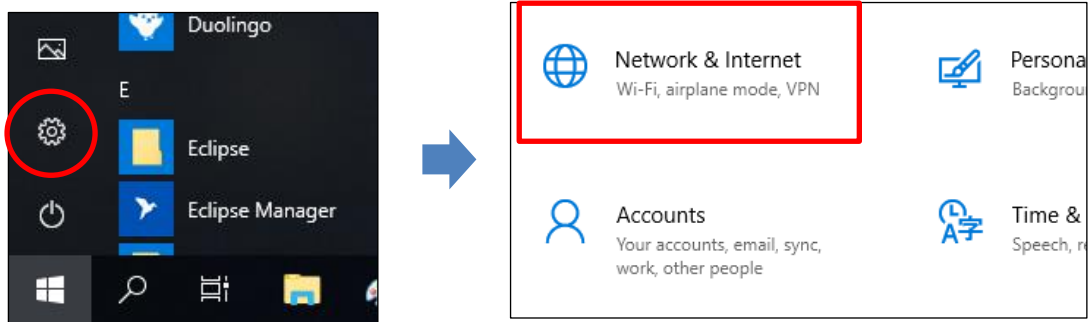
2. How to connect to Sophiawifi2019

IEEE802.11a/b/g/n/ac is available. The connection protocol is DHCP.

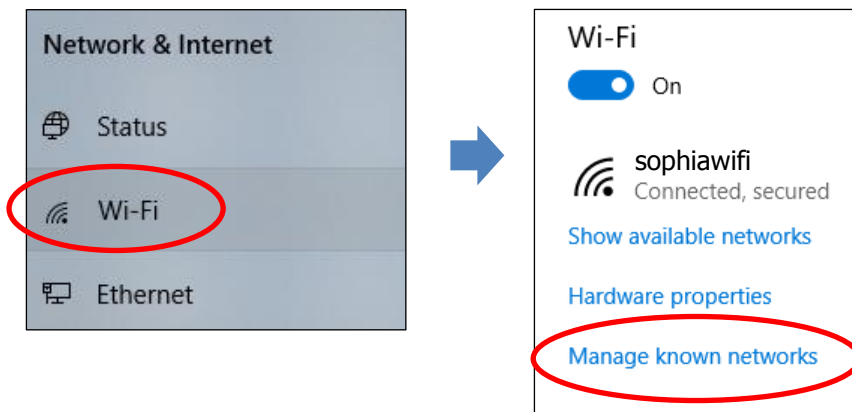
2.1. Instructions for Windows10 (remove previous settings)

* If you have not used previous Wi-Fi (Sophiawifi) skip this chapter.

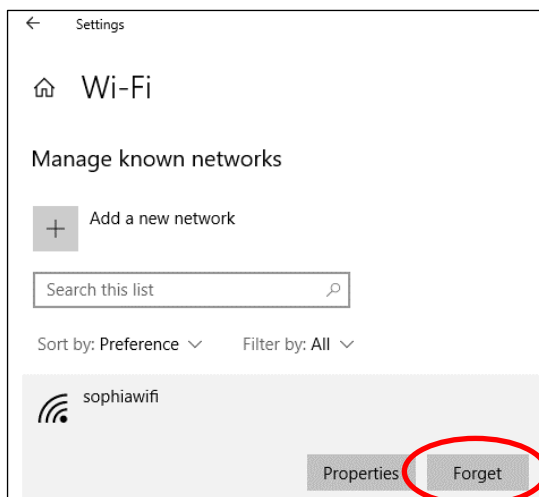
- (1) Click “Settings” on the start menu and select “Network & Internet”.



- (2) Click “Wi-Fi” and select “Manage known networks”.



- (3) Select “sophiawifi” from list of the networks and click “Forget” button.



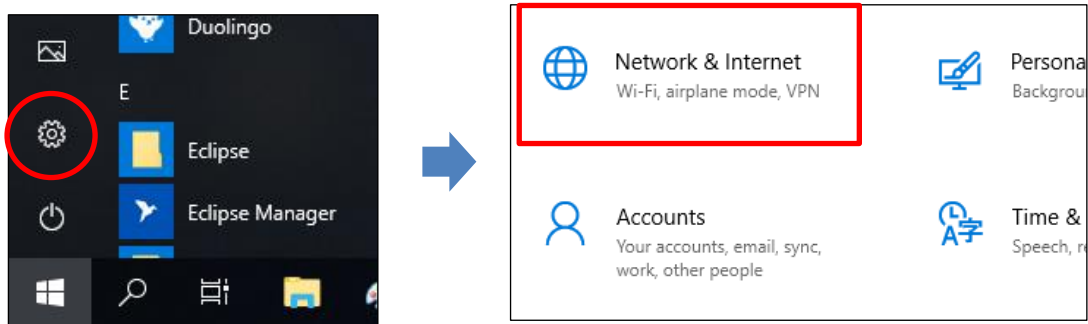
2.2. Instructions for Windows 10 (set up Sophiawifi2019)

Caution:

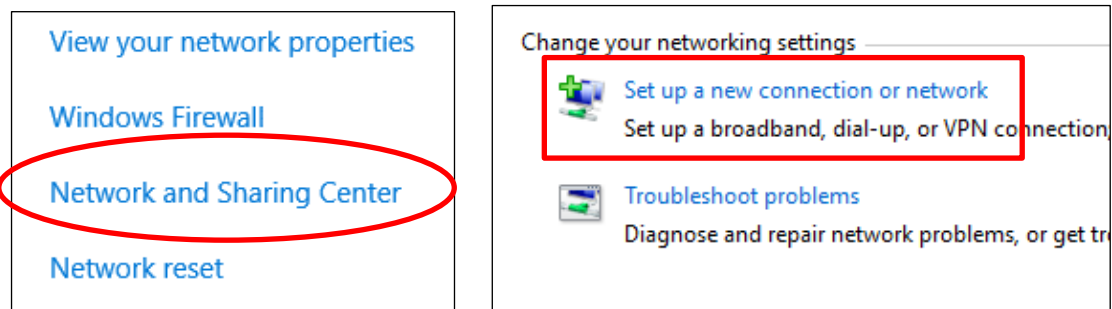
Make sure to follow this instructions or **connection will be failed afterward**. Especially if you use Windows OS, the setting will be completed unintentionally.

When you failed the setting, surely remove the setting and try it again.

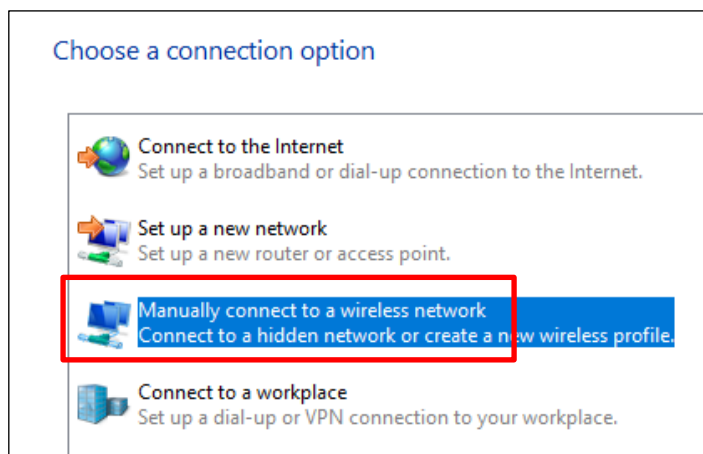
- (1) Click “Settings” on the start menu and select “Network & Internet”.



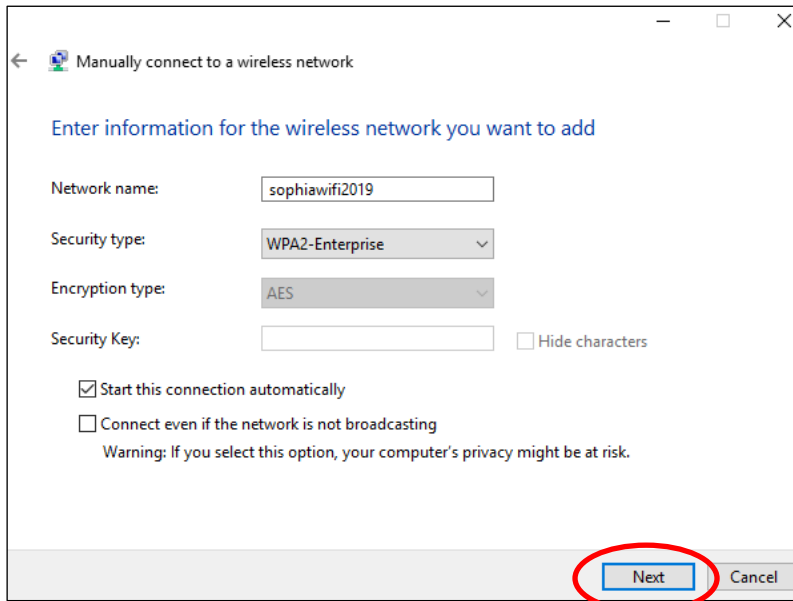
- (2) Select “Network and Sharing Center” and click “Set up a new connection or network”.



- (3) Select “Manually connect to a wireless network”.



(4) Apply following settings and click “Next” button.



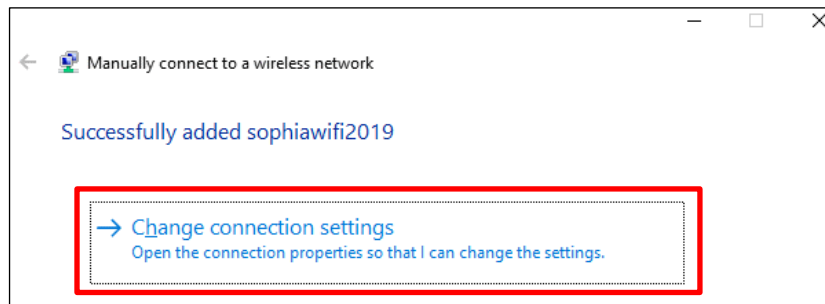
Network name: sophiawifi2019

Security type: WPA2-Enterprise

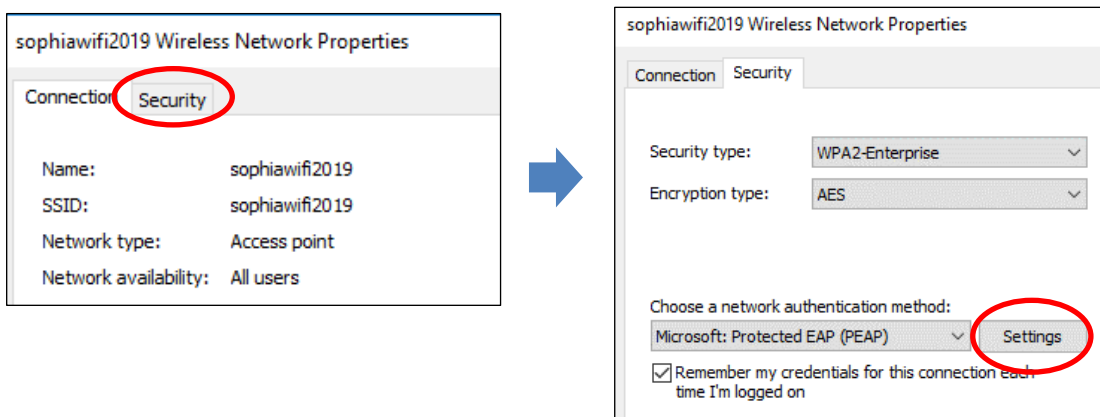
Enable “Start this connection automatically”.

Disable “Connect even if the network is not broadcasting”.

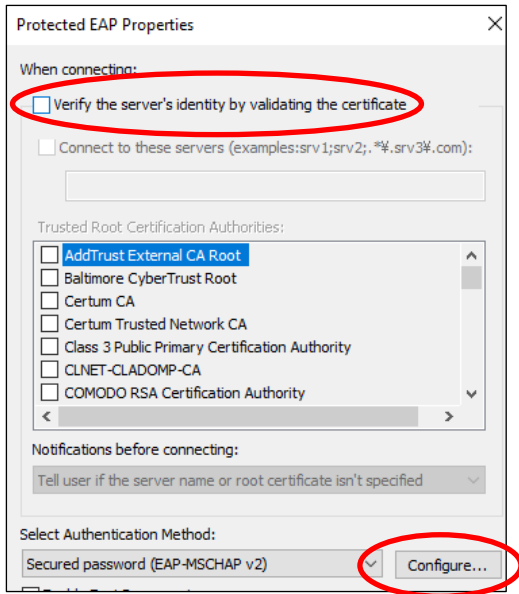
(5) Click “Change connection settings”.



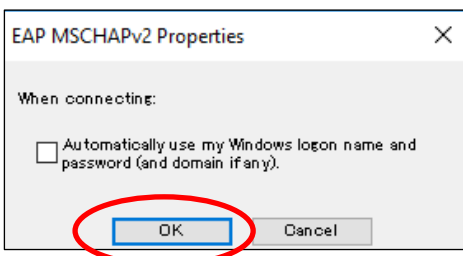
(6) Select “Security” tab and click “Settings” button.



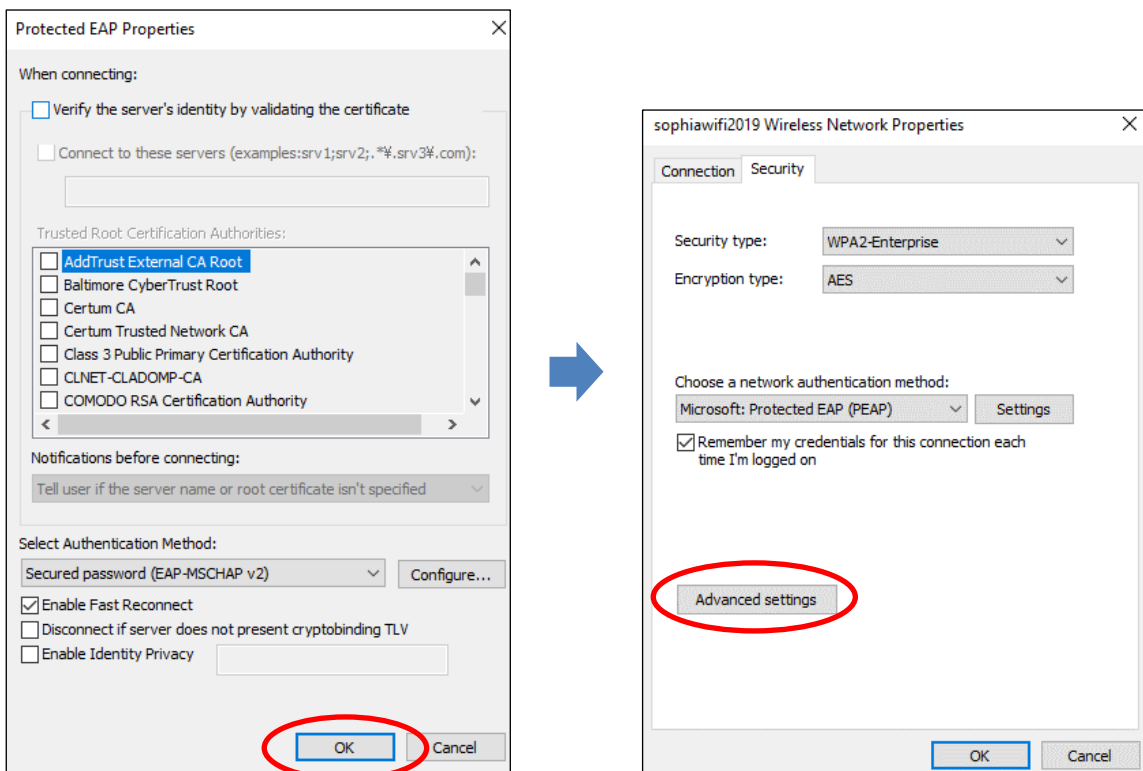
- (7) Disable “Verify the server’s identity by validating the certificate” and click “Configure” on the bottom of the dialog.



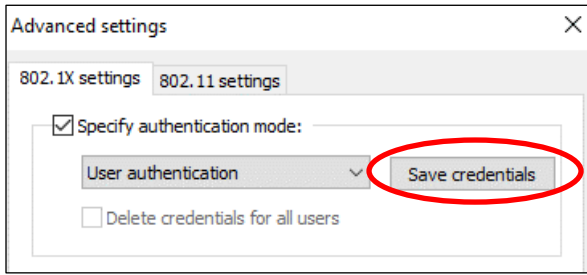
- (8) Disable “Automatically use my Windows logon name and password (and domain if any)” and click “OK” button.



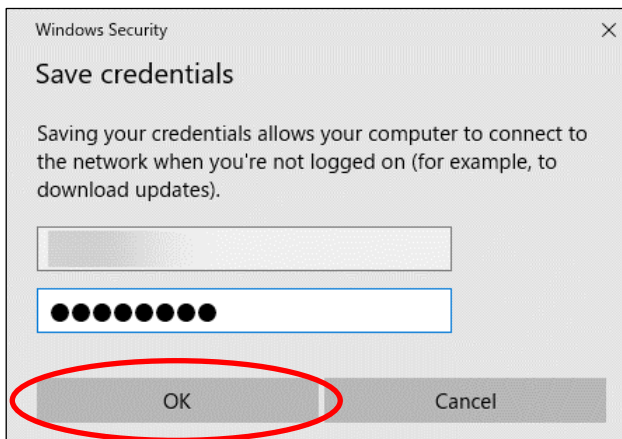
- (9) Click “OK” button and “Advanced settings” button.



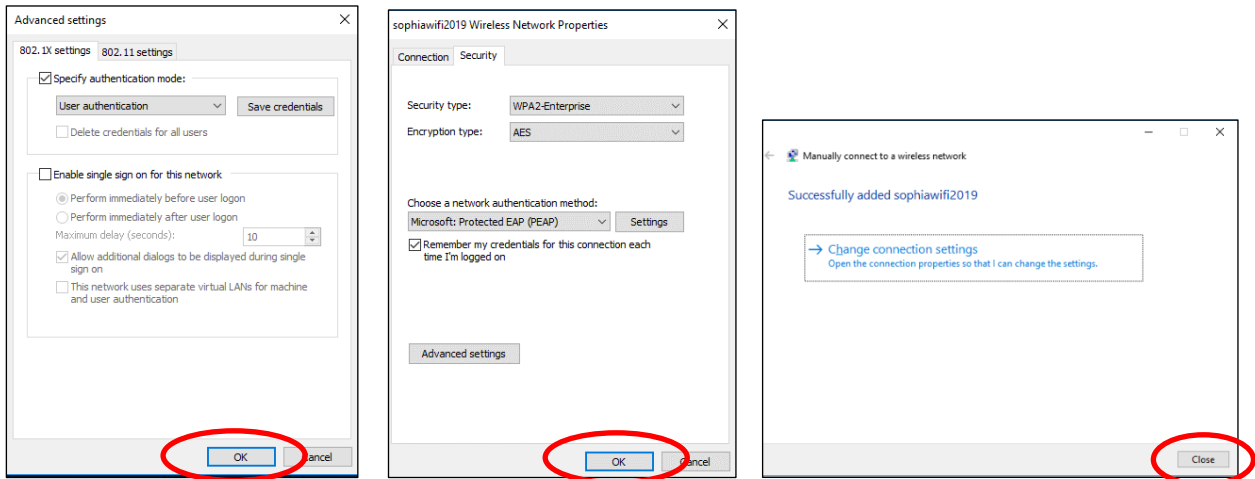
- (10) Enable “Specify authentication mode” and select “User authentication” then click “Save credentials”.



- (11) Input Sophia ICT–Account (faculty/student ID and password) and click “OK” button.



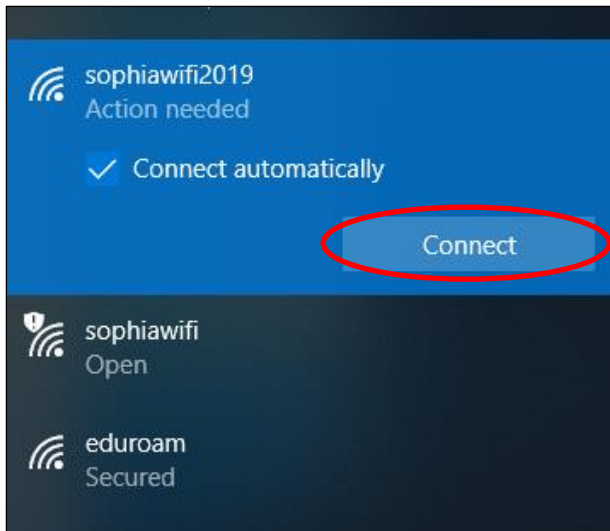
- (12) Click “OK” or “Close” and close setting dialogs.



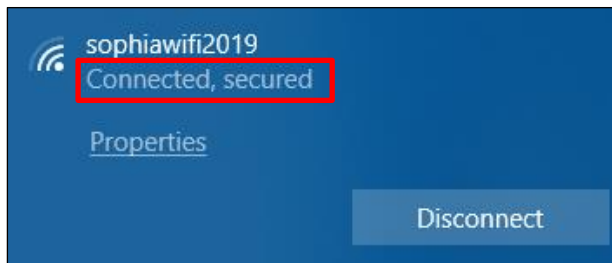
- (13) Click Wi-Fi icon on the bottom-left of the window.



- (14) Select “sophiawifi2019” and click “connect” button.

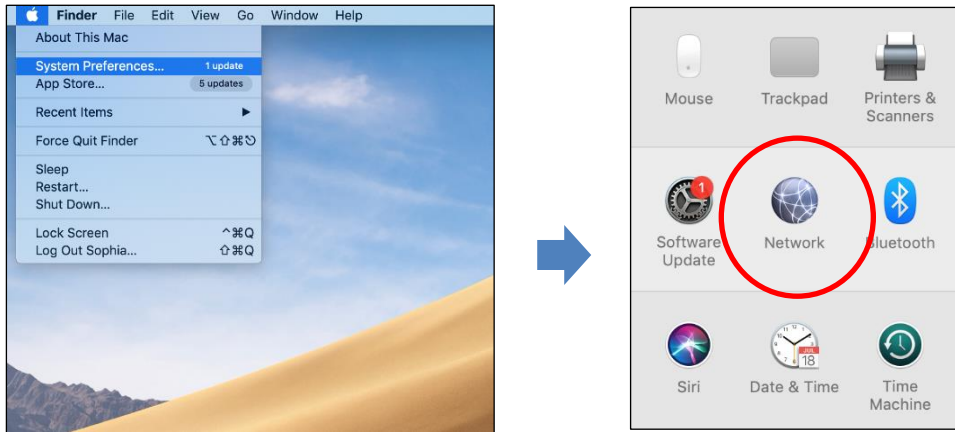


- (15) Wi-Fi connection will be established, if you have completed the settings properly.

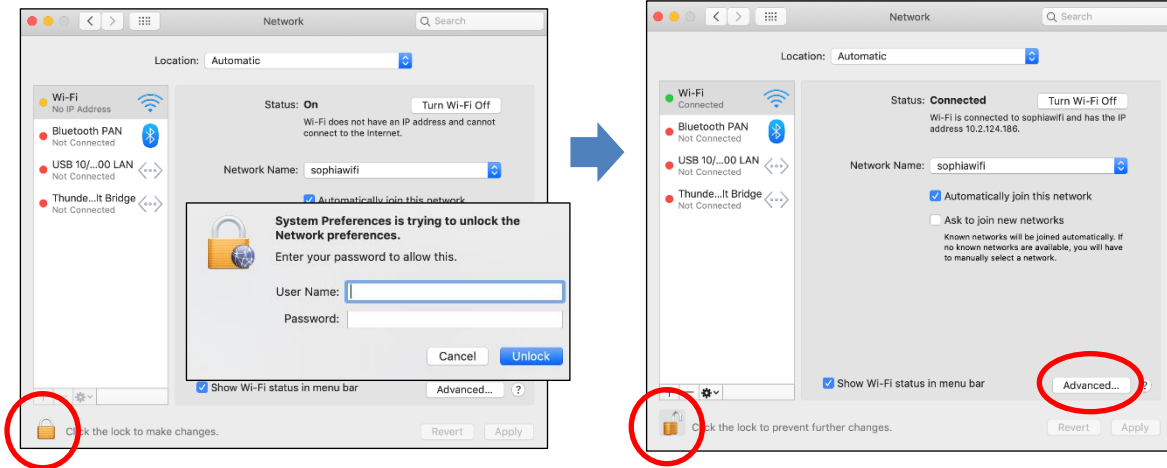


2.3. Instructions for Mac OS

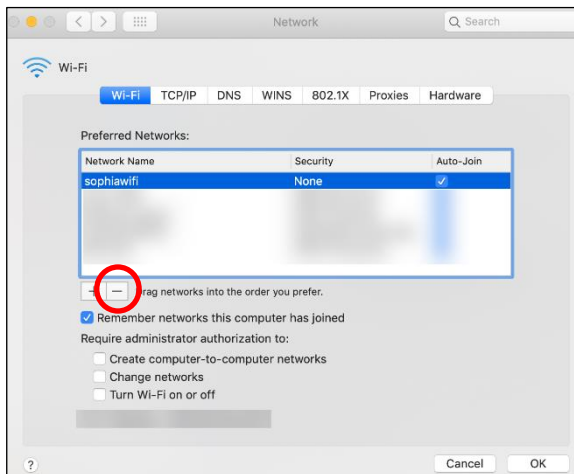
- (1) Select “System Preferences” from apple menu and click “Network”.



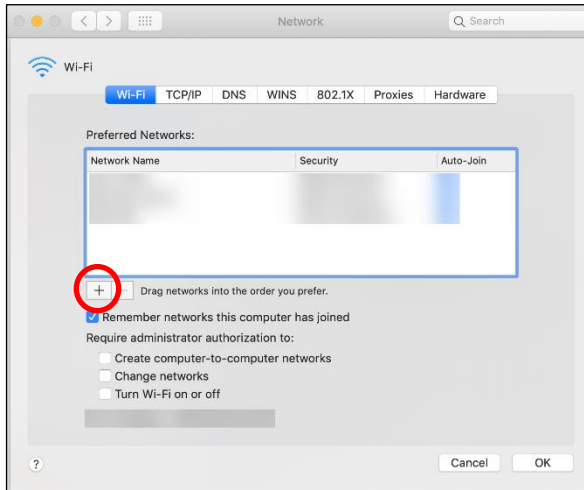
- (2) If preference settings are locked, click lock icon on the bottom-left of the window. Then, input administrator name and password. The settings will be unlocked when you click “Unlock” button. Next, click “Advanced” button.



- (3) Select “sophiawifi” from “Preferred Networks” and click “-” button. If there is not “sophiawifi”, skip this procedure.



(4) Click “+” button.



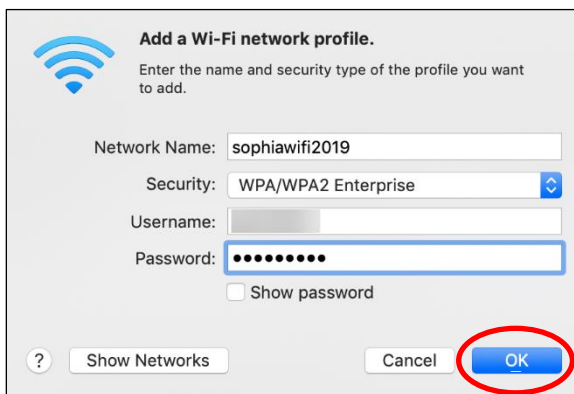
(5) Input following information and click “OK” button.

Network Name: sophiawifi2019

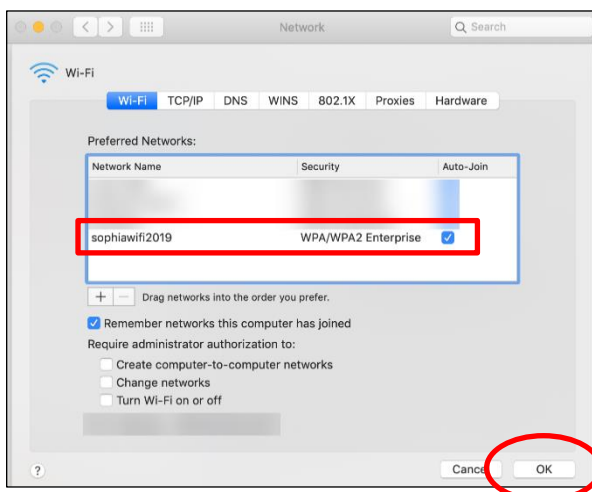
Security: WPA/WPA2 Enterprise

Username: Faculty/Student ID number

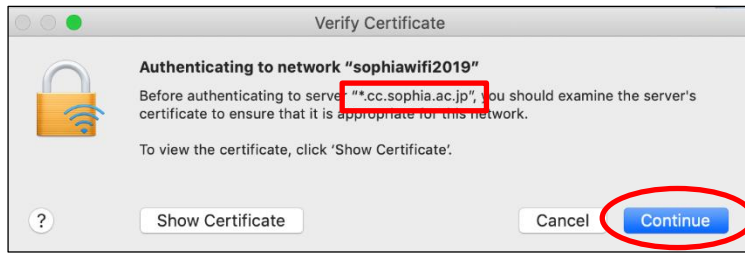
Password: same as login password for Moodle or Sophiamail.



(6) Confirm “sophiawifi2019” is added on “Preferred Networks” and click “OK” button.



- (7) If dialog as below appear when you connect to sophiawifi2019 for the first time, confirm server name is “*.cc.sophia.ac.jp” and click “Continue” button.



3. Services

- (1) Web Browsing
 - ① You can connect to the Internet through web-browser after Wi-Fi connection is established.
- (2) E-mail
 - ① You can use Sophiamail such as “@sophia.ac.jp” or “@eagle.sophia.ac.jp” via OWA (Outlook Web App). Open Sophia University ICT-Office website [http://ccweb.cc.sophia.ac.jp] and click “Office 365 Login” button for faculty or student. Then, input your username and password. The email traffic will be encrypted by SSL.
 - ② You can use third-party mailing service by using email client. Only encryption protocols such as “Exchange”, “POPS” or “IMAPS” are available in that case.
- (3) On-demand Printer
 - ① You can use on-demand printer via sophiawifi2019. Refer Instructions for the printer and apply additional settings for it.
- (4) Restrictions
 - ① External network traffic will be blocked except for web-browsing, email, NTP and DNS.
 - ② Internal network traffic will be disabled except for the services permitted from ICT-Office.

IMPORTANT :

Specific network protocols such as SSH are disabled on sophiawifi2019. Therefore, when you want to access to servers in researching room, connect to eduroam and use Tunneling protocols via VPN connection.

CAUTION

Beware of security problems and use Wi-Fi services at your own risk.

Instructions for Using Wi-Fi Service
Windows 10, Mac OS

Nov 2015	creating new document.
Jan 2016	updated
Sep 2016	updated
Jan 2018	updated
Mar 2019	updated

Author	Sophia University ICT-Office
Address	102-8554 Kioicho 7-1, Chiyoda-ku, Tokyo-to, Japan.
Phone	03(3238)3101
Website	http://ccweb.cc.sophia.ac.jp/

<input type="text" value="Sophia ICT"/>	<input type="button" value="Search"/>
---	---------------------------------------

