

How to Install CaLabo MX Agent (Windows)

— Install with Microsoft Edge —

In order to teach a class with CaLabo MX, the CaLabo Agent must be installed.

Please install CaLabo Agent on your own before the class starts.

If you have already installed CaLabo Agent and need to update it, please update it from "■Update Procedure".

■Not sure if the CaLabo Agent is installed?

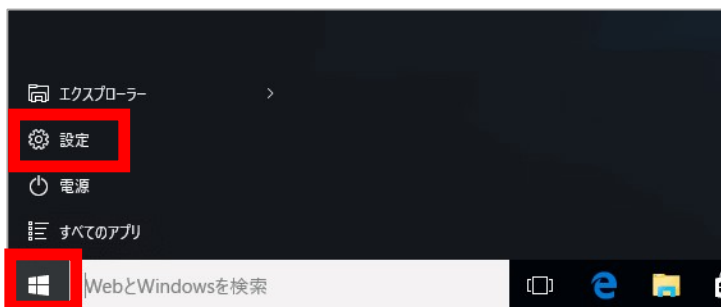
If you are not sure whether or not the Calabo Agent is installed, please follow the procedure below.

If it is not installed, see "P.3 ■Installation Procedure"

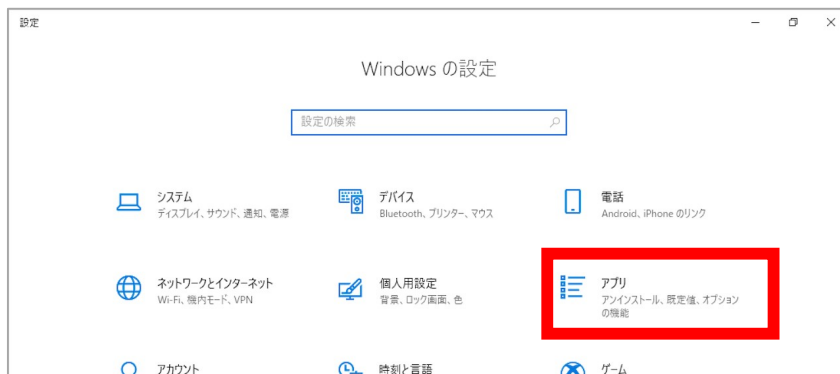
If it is installed and needs to be updated, see "P.8 ■Update Procedure".

<For Windows 10>

1. Click the Start button in the lower left corner of the screen to display the Start menu, then click "Settings".



2. Click "Apps" on the settings screen

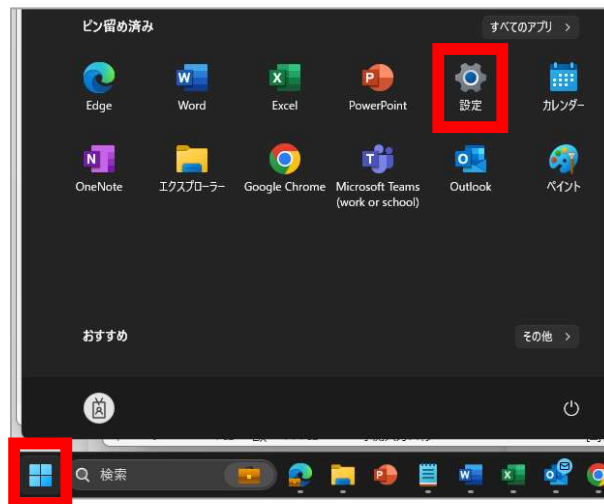


3. Check if "CaLabo Agent" is installed from the application list



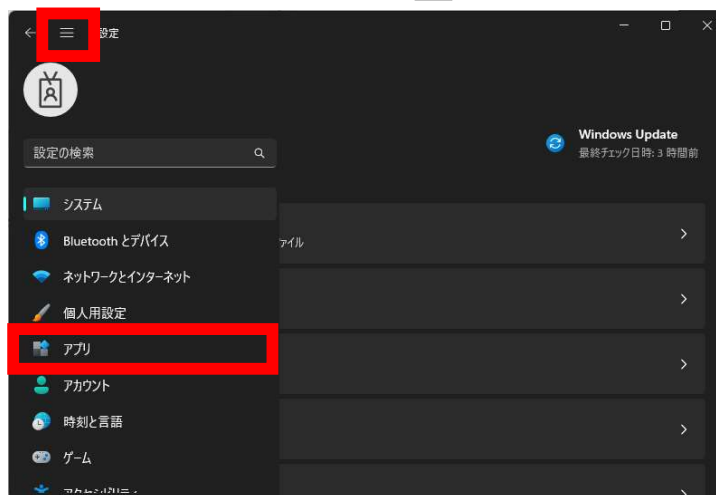
<For Windows 11>

1. Click the Start button in the lower left corner of the screen to display the Start menu, then click "Settings".

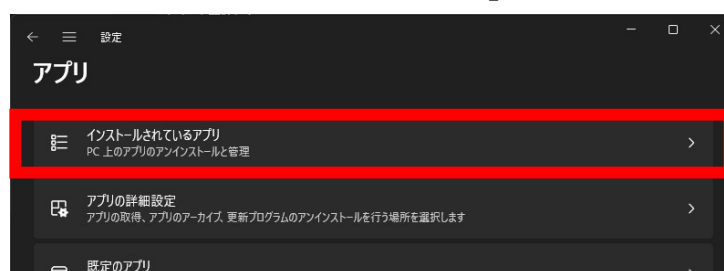


2. Click "Apps" 「アプリ」 on the settings screen.

*If the menu on the left side is not displayed, click the "☰" button to display the menu.



2. Click on "Apps & Features" 「インストールされているアプリ」.



3. Check if "CaLabo Agent" is installed from the list of installed applications



■Installation Procedure

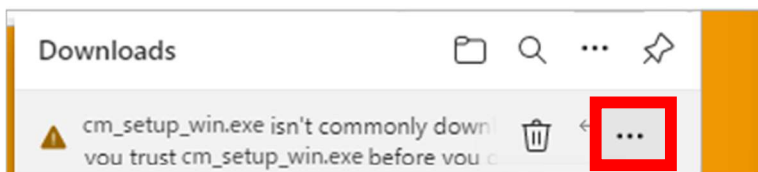
If you are installing "CaLabo Agent" for the first time, please follow this procedure.

1. Start Google Chrome and go to "<https://mx-sophia.chieru.net/downloadAgent>".
2. Click "Download" 「ダウンロードする」 under Windows.

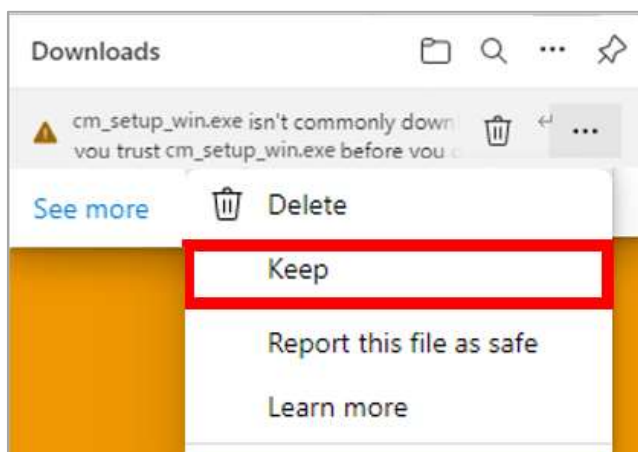


※If you are blocked with a message such as "~ isn't commonly downloaded," during downloading, please follow the steps ① to ④ below. If nothing is displayed and the download is successful, please go directly to step 2.

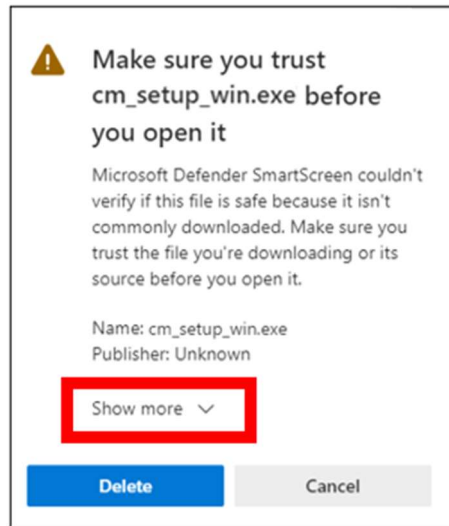
- ① Click on "...". Other Actions in the upper right corner of the screen.



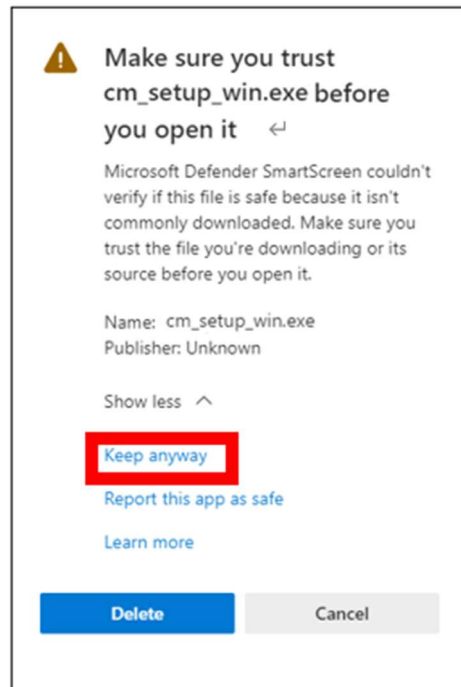
- ② Click "Keep" 「保存」.



③ When the confirmation screen is displayed, click "Show more" 「詳細表示」.



④ Click "Keep anyway" 「保持する」 to save the CaLaboMX installer and proceed to step 7.

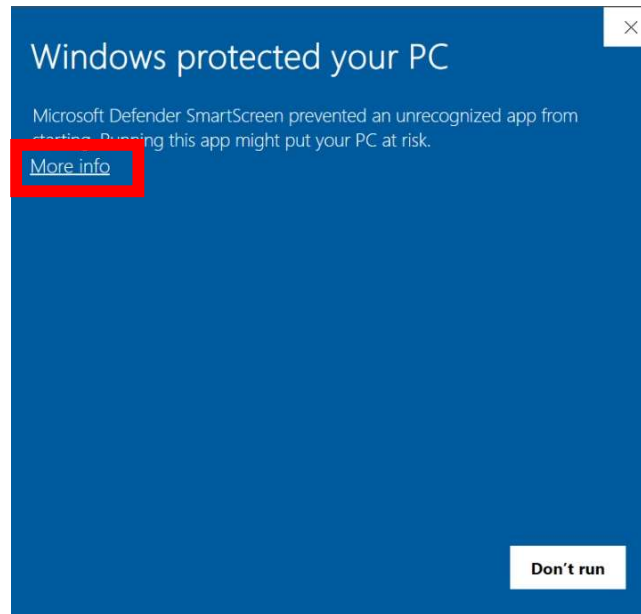


2. Open the download folder.

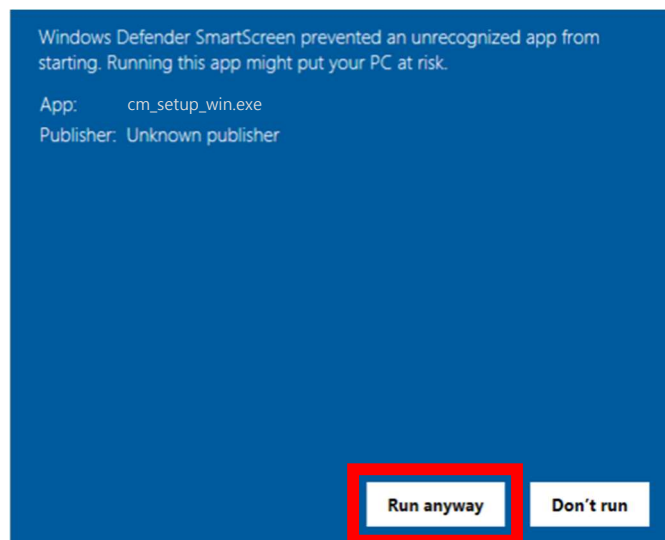
3. Double-click "cm_setup_win.exe".



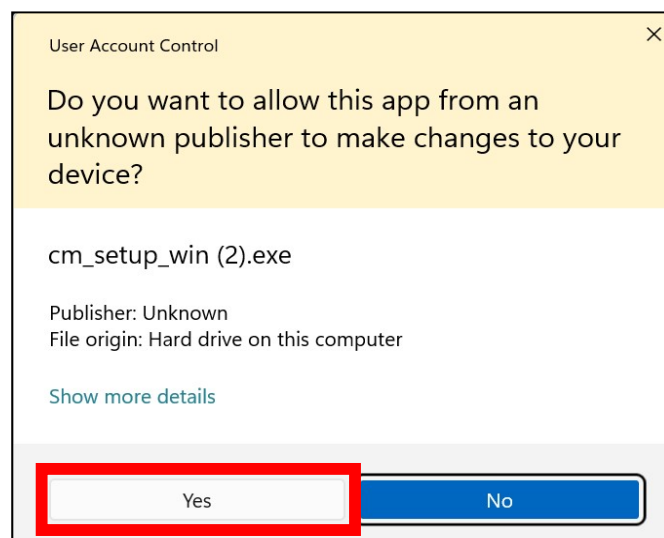
4. If the following screen appears, click "More Info" 「詳細情報」.
(If no screen appears, skip this step.)



5. Then click "Run anyway" 「実行」.
(If you do not see the screen, skip this step.)



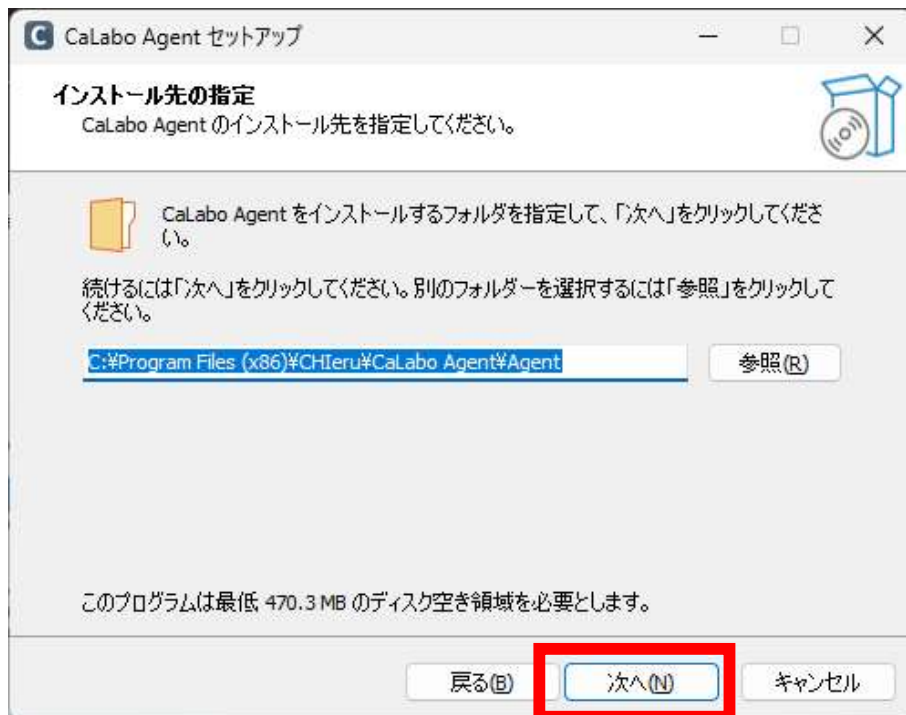
- ※User Account Control "Do you want to allow apps from this unknown publisher to make changes to your device?" 「この不明な発行元からのアプリがデバイスに変更を加えることを許可しますか？」 screen appears, click "Yes" 「はい」. (If you do not see the screen, skip this step.)



6. Click "Next" 「次へ」.



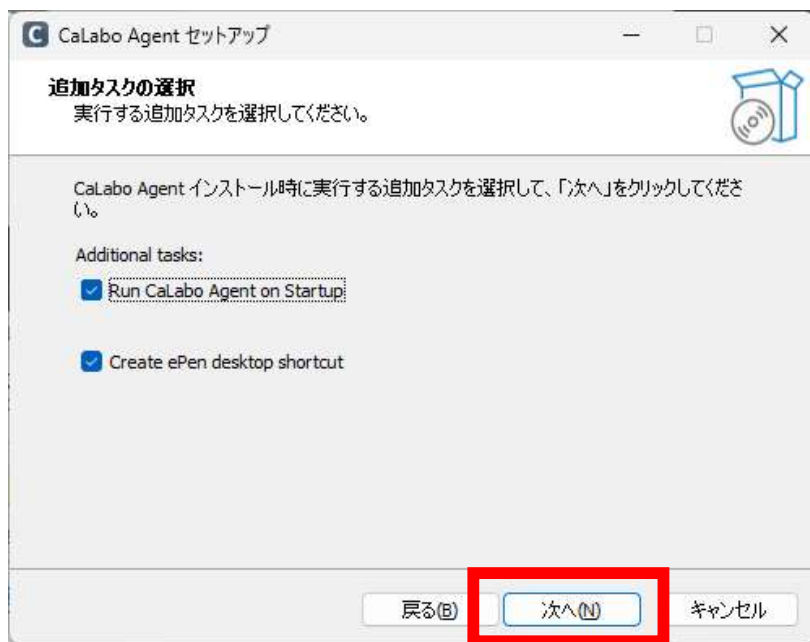
7. Click "Next" 「次へ」.



8. Click "Next" 「次へ」.

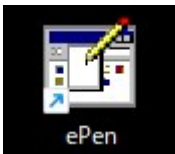
Check "Run CaLabo Agent on Startup" to start CaLaboAgent at PC startup.

Check "Create ePen desktop shortcut" to place an ePen shortcut on your desktop.



※ePen is a drawing software.

Please refer to the last page for how to use it..



9. Click "Finish" 「完了」.

(If "Run CaLabo Agent" is checked, CaLabo Agent will be started when "Finish" is clicked.)



■Update Procedure

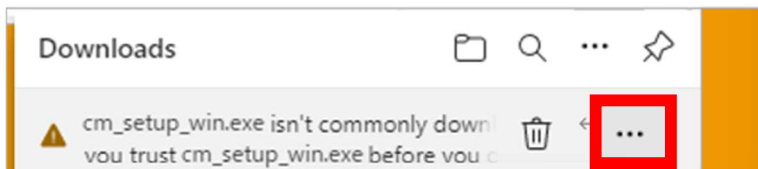
If you have already installed "CaLabo Agent", please follow this procedure.

1. Start Google Chrome and go to "<https://mx-sophia.chieru.net/downloadAgent>"
2. Click "Download the updater 「アップデートをダウンロードする」" under Windows.

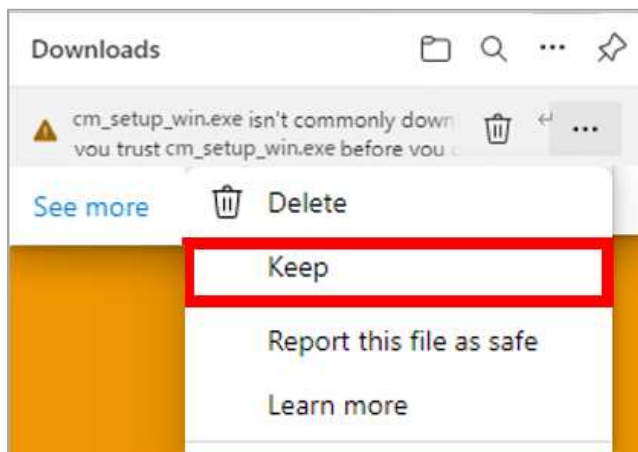


※If you are blocked with a message such as "~ isn't commonly downloaded," during downloading, please follow the steps ① to ④ below. If nothing is displayed and the download is successful, please go directly to step 2.

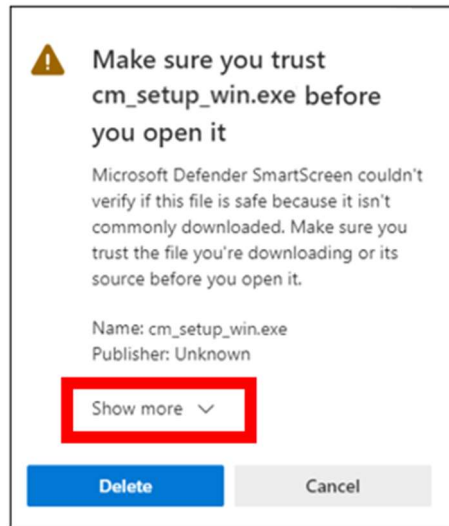
- ① Click on "...". Other Actions in the upper right corner of the screen.



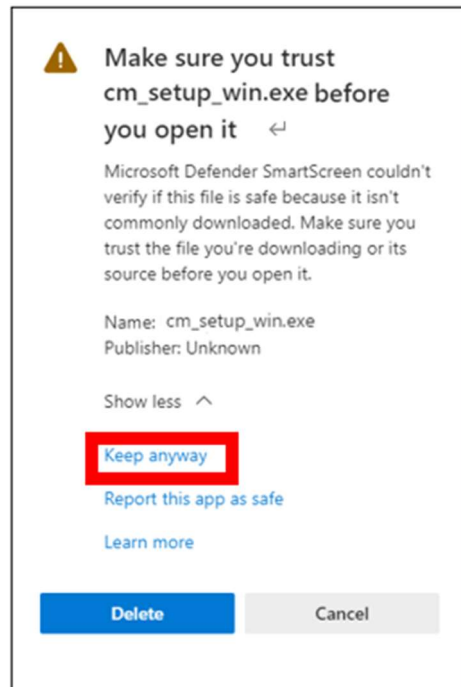
- ② Click "Keep" 「保存」.



③ When the confirmation screen is displayed, click "Show more" 「詳細表示」.



④ Click "Keep anyway" 「保持する」 to save the CaLaboMX installer and proceed to step 7.

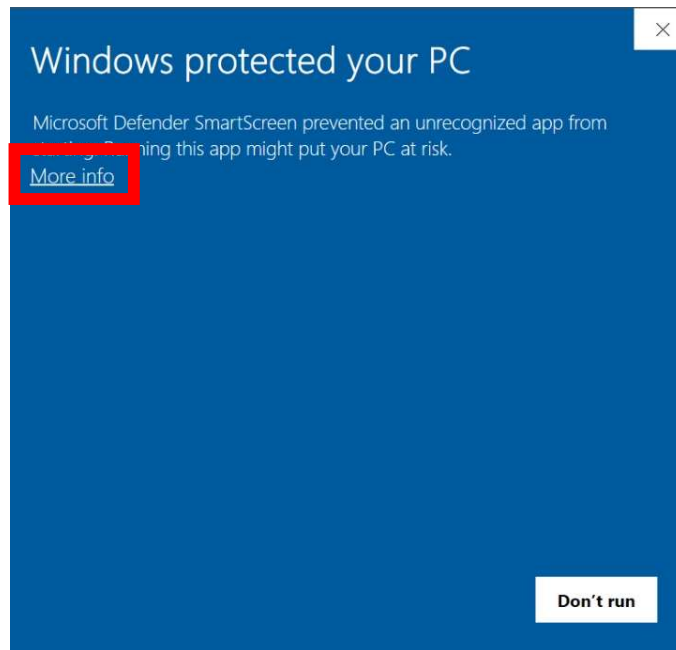


3. Open the download folder.

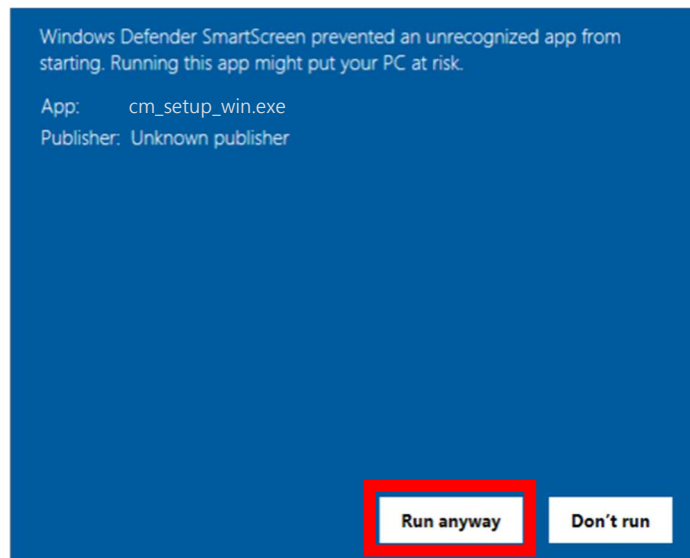
4. Double-click "cm_update_win.exe".



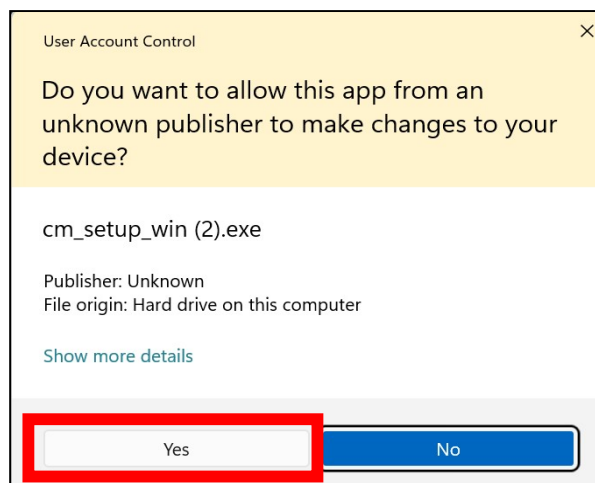
5. If the following screen appears, click "More Info" 「詳細情報」.
(If the screen does not appear, skip it.)



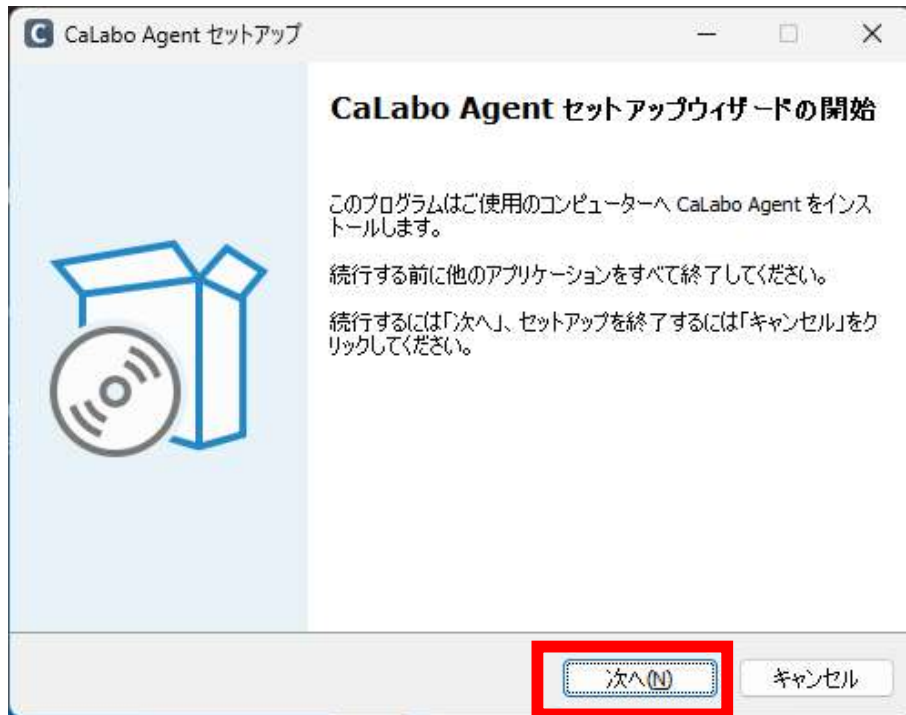
6. Then click "Run anyway" 「実行」.
(If you do not see the screen, skip this step.)



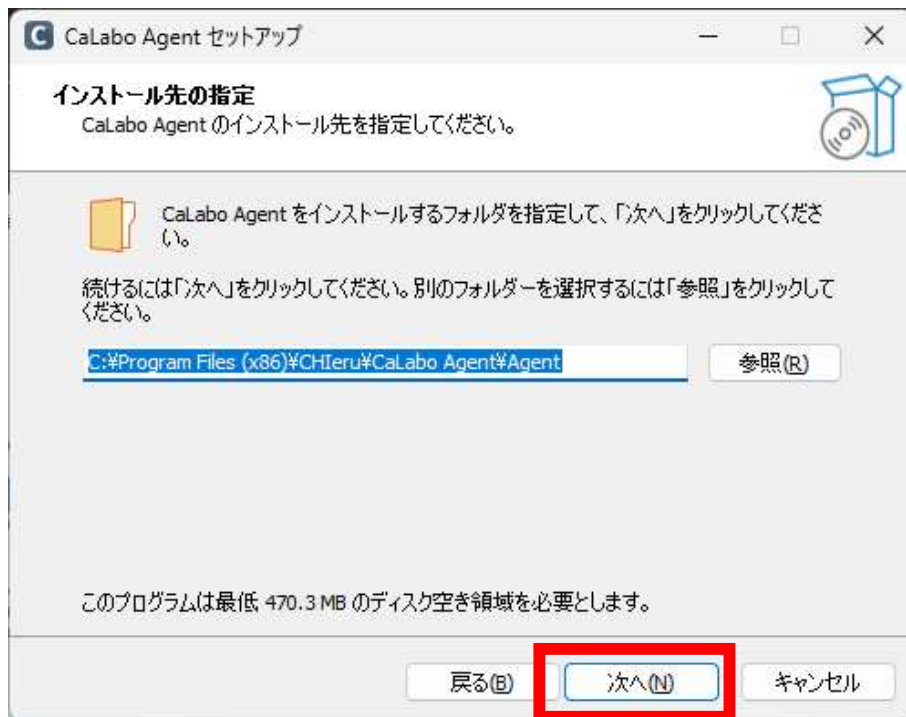
※User Account Control "Do you want to allow this apps from an unknown publisher to make changes to your device?" 「この不明な発行元からのアプリがデバイスに変更を加えることを許可しますか？」 screen appears, click "Yes" 「はい」. (If you do not see the screen, skip this step.)



7. Click "Next" 「次へ」.



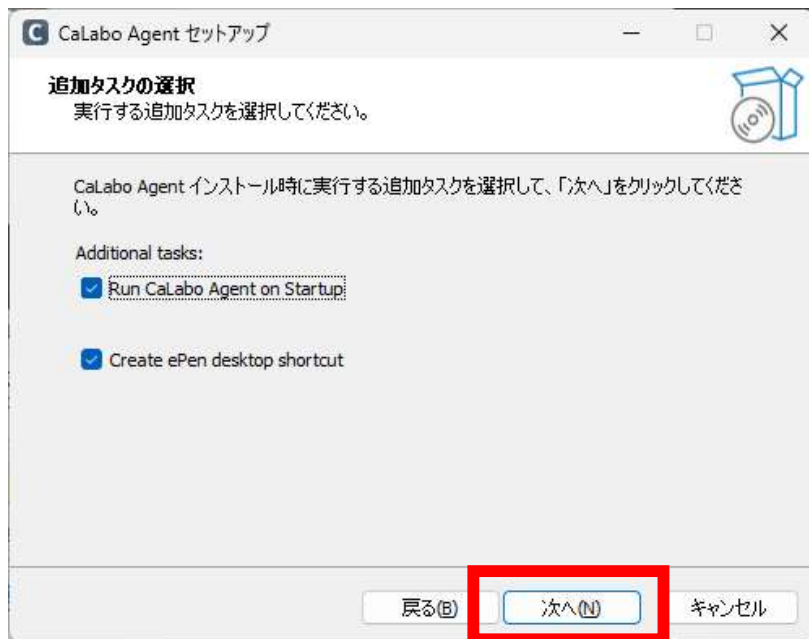
8. Click "Next" 「次へ」.



9. Click "Next" 「次へ」.

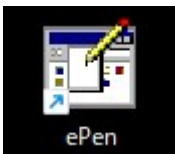
Check "Run CaLabo Agent on Startup" to start CaLaboAgent at PC startup.

Check "Create ePen desktop shortcut" to place an ePen shortcut on your desktop.



※ePen is a drawing software.

Please refer to the last page for how to use it..



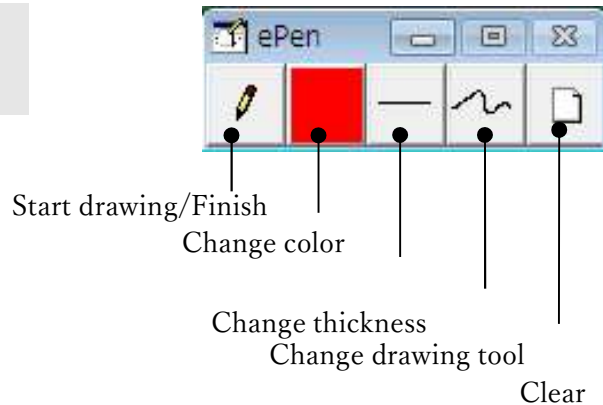
10. Click "Finish" 「完了」.

(If "Run CaLabo Agent" is checked, CaLabo Agent will be started when "Finish" is clicked.)



How to use ePen

- If a window of other application software overlaps the drawn markings, the markings in the overlapped area will be erased.



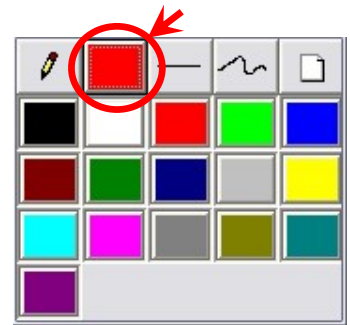
Start drawing/Finish

Click [ePen] button to turn it ON and switch to drawing mode. The mouse cursor will change to a pen and you will be able to draw.

Click again to turn OFF the button, and the mouse cursor will return to its original shape, and you will be able to click and perform other operations.

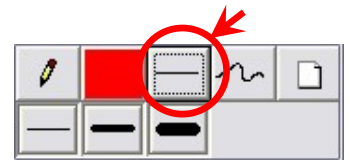
Change color

Click [Change color] button and a color palette will appear, so you can select the color for drawing.



Change thickness

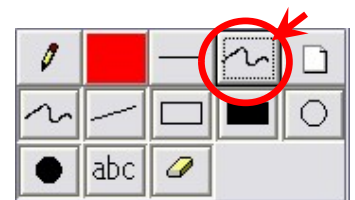
Click [Change thickness] button and the line type palette will appear, so you can select the thickness of the pen.



Change drawing tool

Click [Change drawing tool] button and the drawing tool palette will appear, so you can select the type of drawing.

(Freehand, Line, Rectangle, Fill-in Rectangle, Circle/Oval, Fill-in Circle/Oval, Text Input, Eraser)



Clear

Click [Clear] button and all drawing will be cleared.