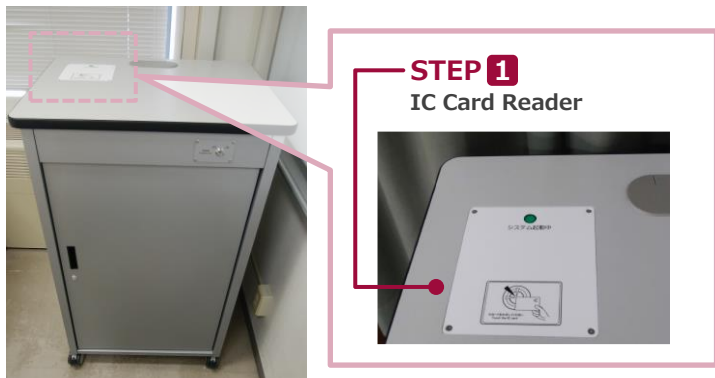
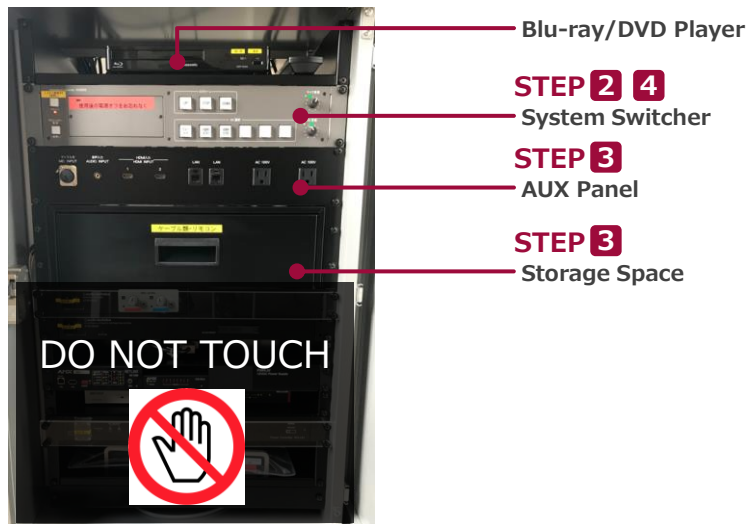
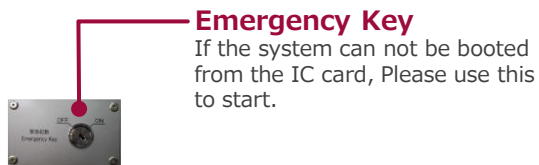


Please operate the equipment inside the AV wagon.



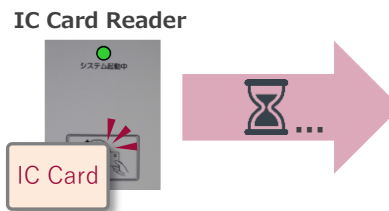
AV Wagon



Inside the Wagon

1 System Start-Up

Touch your IC card to the reader.



System ON / Door's Key is Unlock

You can use the Wireless Microphone.
Take out the microphone charger and turn on the microphone.

2 AV Presentation

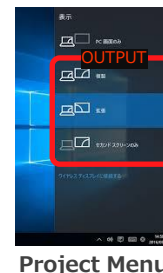
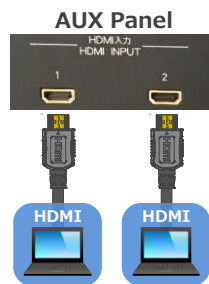
Open the door of the wagon and operate the control panel.

- ① Projector Power ON/OFF ※Long Press
- ② Lower the screen
- ③ Video Source Select
- ④ MIC Volume
- ⑤ AV Volme
- ⑥ System Shut Down ※Long Press



3 Connecting Your BYOD Devices

- Connect your BYOD device (with the document cameras) to the HDMI INPUT (AUX panel).
If you use a laptop PC, charge the output setting.
The Cable is stored in the drawer.

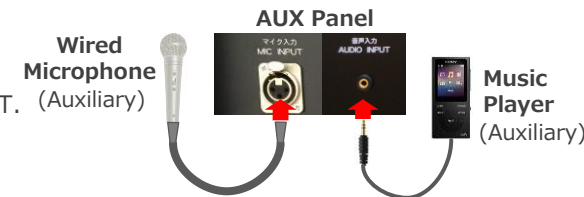


How To Open "Project" menu

《Windows 10》
『Windows Key』 + 『P』

- Duplicate : Duplicate Desktop on Projector.
- Extend : Extend Desktop to Projector.
- Second screen Only : Projector Only.

- Connect to wired microphone to the MIC INPUT. (Auxiliary)
- Connect to music player to the AUDIO INPUT.



4 System OFF

Press **Shut Down button (⑤)** and **Close the Wagon's Door**.

※If you use Emergency Key, Please do not press Shut Down Button.
Turn off Emergency Key, and Close the Wagon's Door.