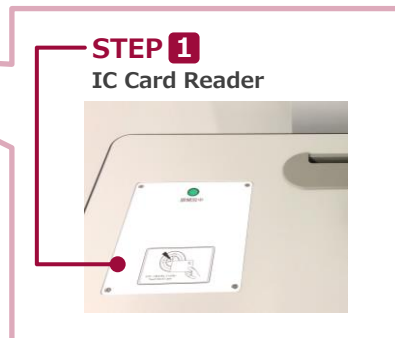


Please operate the equipment inside the AV wagon.



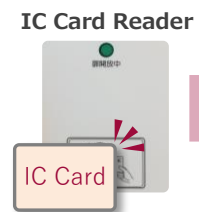
AV Wagon



STEP 1
IC Card Reader

1 System Start-Up

Touch your IC card to the reader.

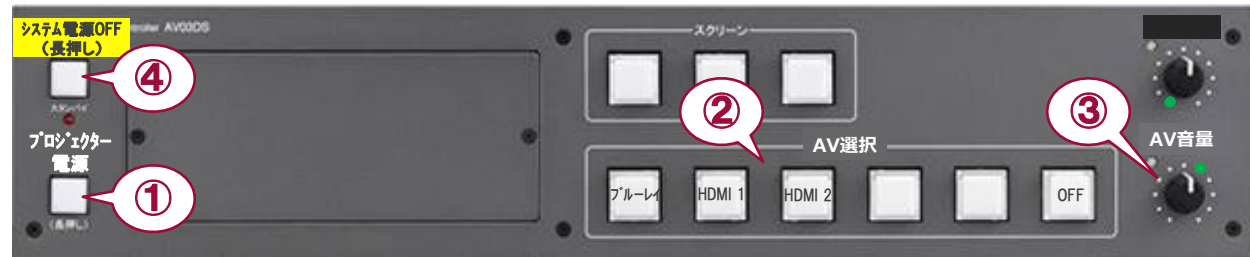


System ON / Door's Key is Unlock

2 AV Presentation

Open the door of the wagon and operate the control panel.

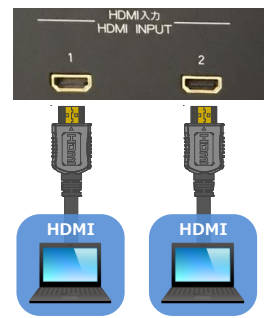
- ① Projector Power ON/OFF** ※Long Press
- ③ Audio Volume**
- ② Video Source Select**
- ④ System Shut Down** ※Long Press



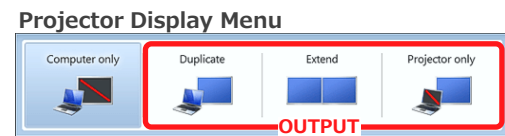
System Switcher

3 Connecting Your BYOD Devices

Connect your BYOD device to the AUX panel.
The Cable is stored in the drawer.



If you use a laptop PC, charge the output setting.



- Duplicate : Duplicate Desktop on Projector.
- Extend : Extend Desktop to Projector.
- Projector Only

How To Open Projector Display Menu

《Windows 7》
『Windows』 + 『P』



4 System OFF

Press **Shut Down button (④)** and **Close the Wagon's Door**.
※If you use Emergency Key, Please do not press Shut Down Button.
Turn off Emergency Key, and Close the Wagon's Door.

Emergency Key
If the system can not be booted from the IC card, Please use this to start.



Blu-ray/DVD Player

STEP 2 4
System Switcher

STEP 3
AUX Panel

STEP 3
Storage Space

DO NOT TOUCH

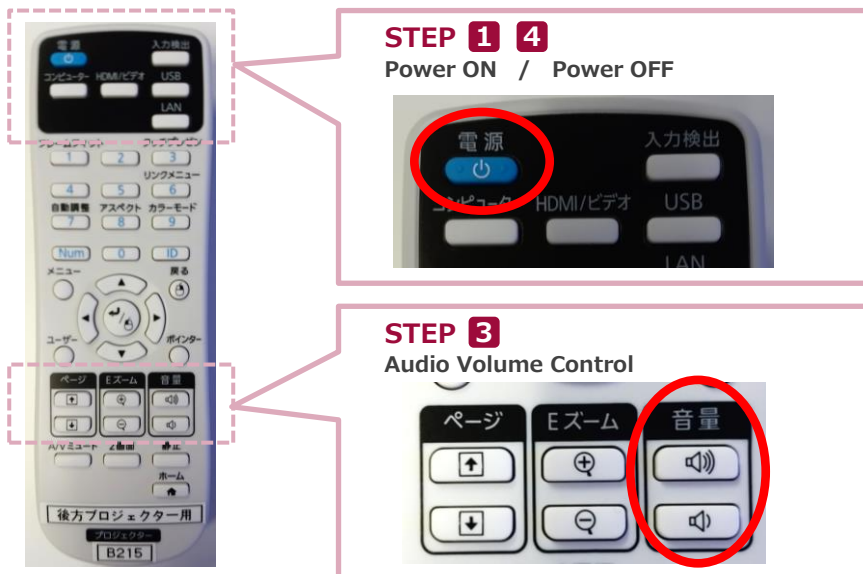


Inside the Wagon



1 Projector Power ON

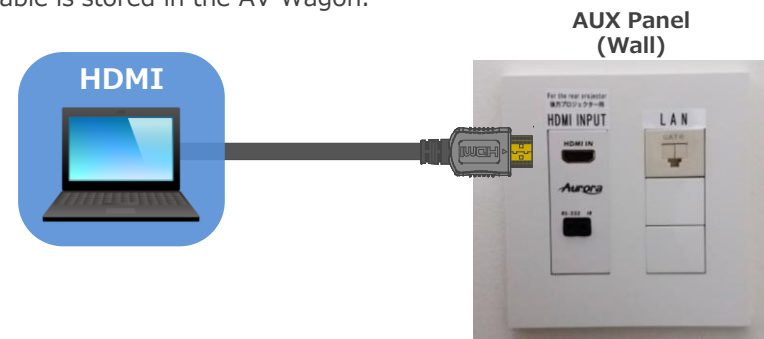
Press the Power button on the Remote Control.
Remote Control is stored in the AV Wagon.



Projector Remote Control

2 Connecting Your BYOD Devices

Connect your BYOD device to the AUX panel.
The Cable is stored in the AV Wagon.



If you use a laptop PC, charge the output setting.

Projector Display Menu



- Duplicate : Duplicate Desktop on Projector.
- Extend : Extend Desktop to Projector.
- Projector Only

How To Open Projector Display Menu

《Windows 7》
『Windows』 + 『P』



3 Audio Volume Control

Press the Volume button on the Remote Control.

4 Projector Power OFF

Press the Power button on the Remote Control **twice**.