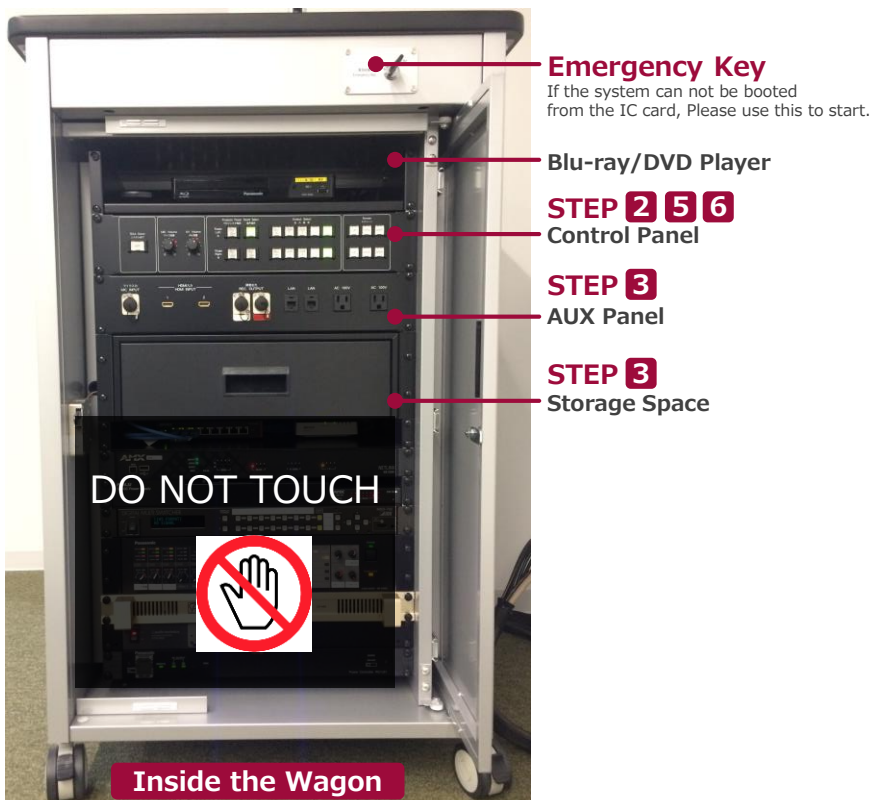
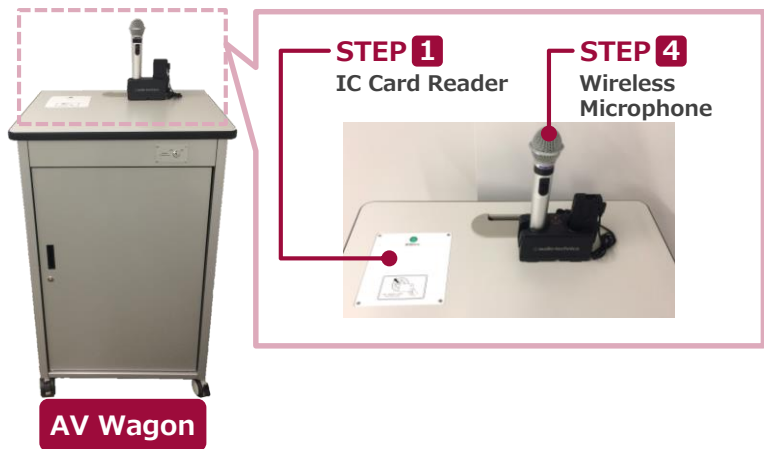
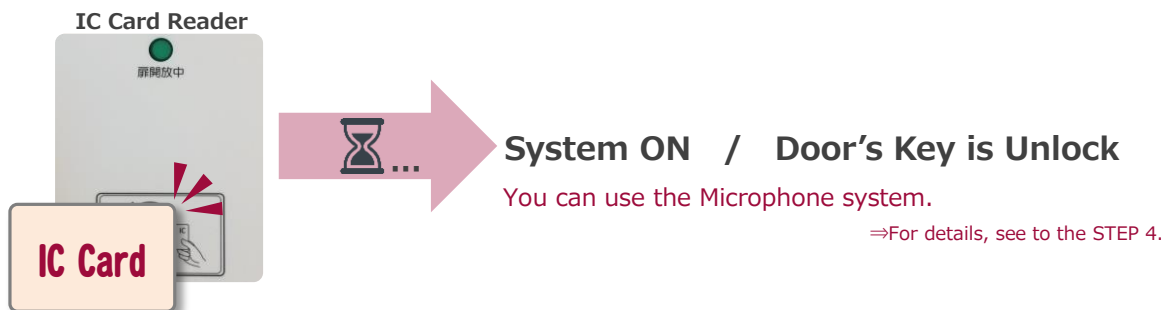


Please operate the equipment inside the AV wagon.



1 System Start-Up

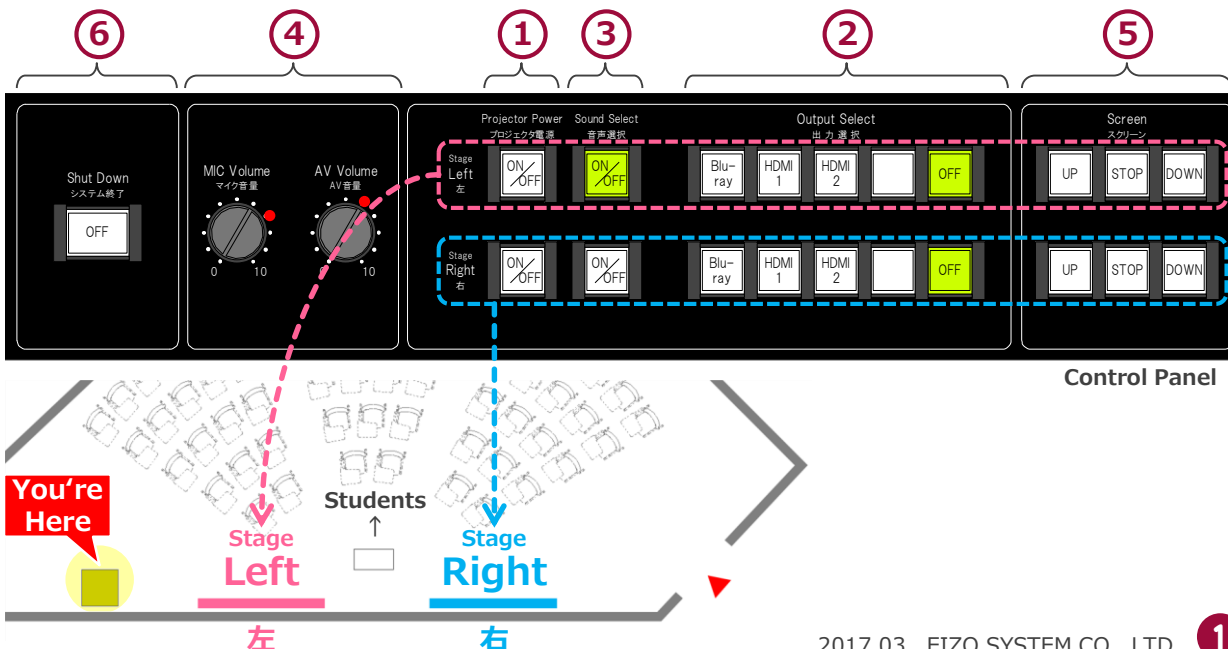
Touch your IC card to the reader.



2 AV Presentation

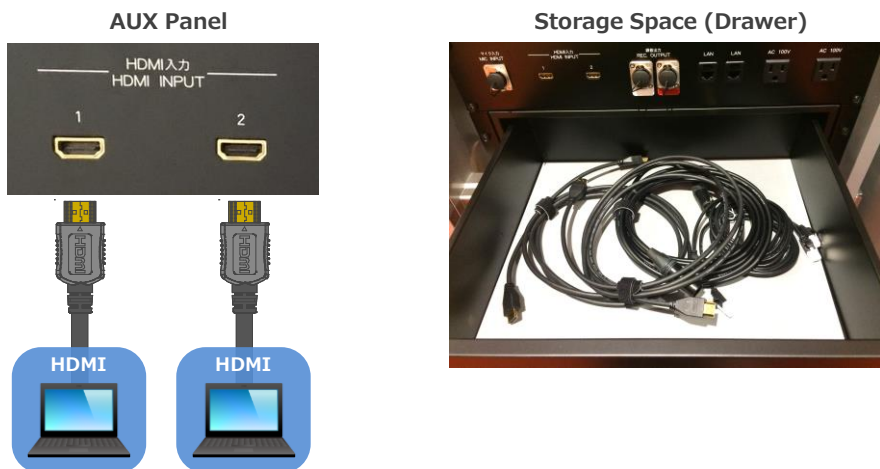
Open the door of the wagon and operate the control panel.

- ① Projector Power ON/OFF ※The screen goes down at the same time as ON.
- ② Video Source Select
- ③ Audio Select
- ④ Audio Volume
- ⑤ Screen Control
- ⑥ System Shut Down



3 Connecting Your BYOD Devices

Connect your BYOD device to the AUX panel.
The Cable is stored in the drawer.



If you use a laptop PC, charge the output setting.

Projector Display Menu



- **Duplicate** : Duplicate Desktop on Projector.
- **Extend** : Extend Desktop to Projector.
- **Projector Only**

How To Open Projector Display Menu

《Windows 7》

Press 『Windows』 + 『P』



《Not Windows 7》

[Fn] + [F2]	MSI
[Fn] + [F3]	NEC, Panasonic, SOTEC, MITSUBISHI, Everex
[Fn] + [F4]	HP, Gateway
[Fn] + [F5]	ACER, TOSHIBA, SHARP, SOTEC
[Fn] + [F7]	SONY, IBM, Lenovo, HITACHI
[Fn] + [F8]	DELL, ASUS, EPSON, HITACHI
[Fn] + [F10]	FUJITSU

4 Use Wireless Microphone and Auxiliary Wired Microphone

Take out the microphone charger and turn on the microphone.
Connect to wired microphone to the AUX panel.

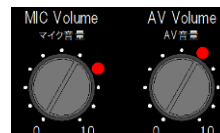


Make sure to return to the microphone charger after using the microphone.

5 Audio Volume Control

The volume is adjusted to the optimum level beforehand.

When adjustment is necessary, please operate the volume knob on the control panel.



Please return to the original level (●) after using the system.

MIC Volume
Wireless microphone
and Wired microphone

AV Volume
Video audio (Blu-ray, Laptop PC etc.)

6 System OFF

Press **Shut Down button** on Control Panel and **Close the Wagon's Door**.

