

# **Sophia Mail -Setting Manual for Smartphone-**

Sep. 2024

Sophia University ICT Office

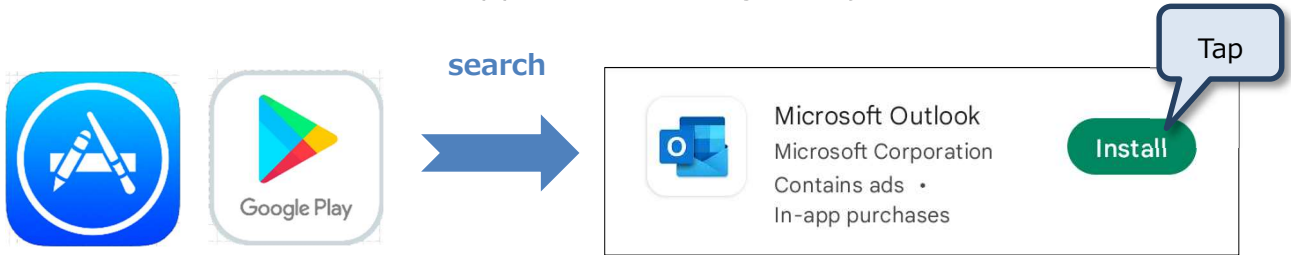
Contents

1. Outlook application (iPhone, Android) ※Recommended .....	3
2. iPhone/iPad/iPod(iOS15).....	6

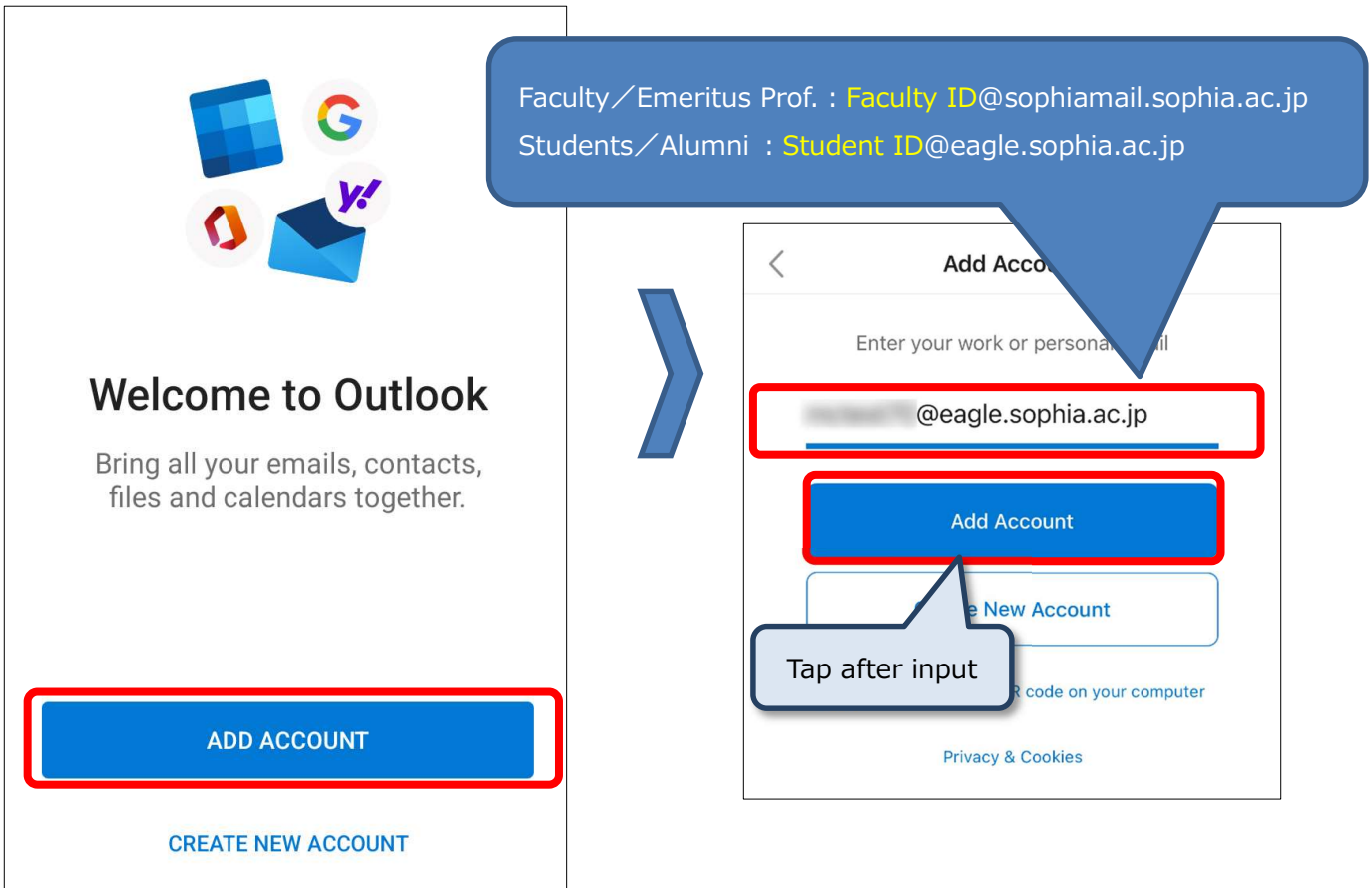
# 1. Outlook application (iPhone, Android) ※Recommended

Sophia Mail is operated using Microsoft’s Microsoft365 cloud service, which allows users to use Microsoft’s Outlook application (free) available on the App Store and Google Play Store. Since it is the company’s service and app, we recommend using it for its advantages such as easy-to-understand settings and screen structure, and stable use.

- (1) Search for “Outlook” in the App Store or Google Play Store and install.



- (2) Open the Outlook apps and enter username. ※Not email address.



- (3) Enter your 'Login ID for system on campus(Student ID or Faculty ID)' and 'password' for Sophia ICT Account, then click [Login] button.

上智大学  
SOPHIA UNIVERSITY

Integrated Authentication System  
統合認証システム

Login ID Student ID or Faculty ID

Password

パスワードを忘れた方は以下のリンクをクリック  
Click the link if you have forgotten your password

日本語/English

Login

Same as Sophia Mail, Moodle, Sophia Wi-Fi, VPN...  
If the password has not been changed from the pre-set password, enter the password as listed in the ICT Account Notice.

Tap after input

- (4) Tap [MAYBE LATER] as it will not be adding another account this time.

Add Another Account

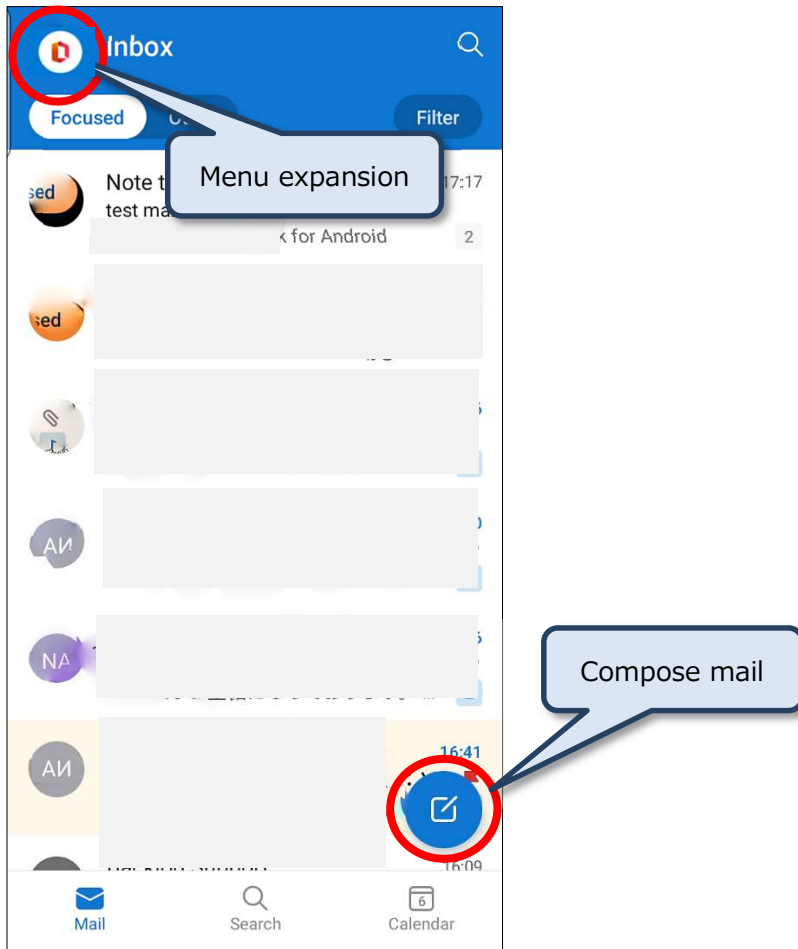
Would you like to add another account?

Maybe Later Add

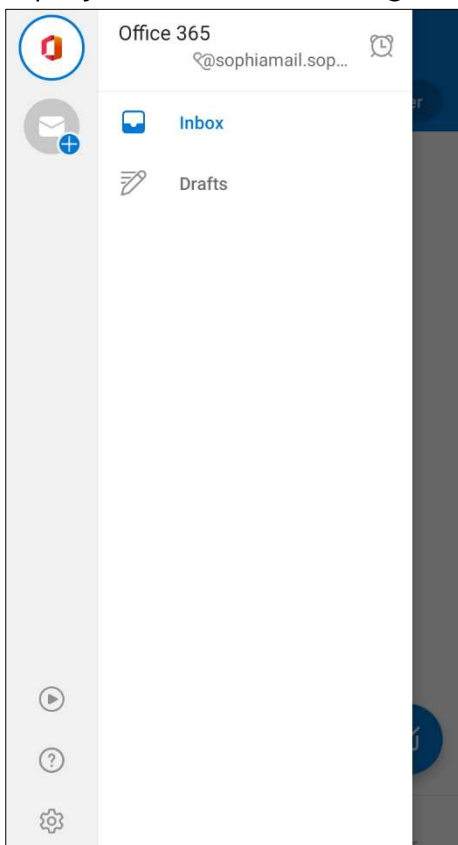
Tap

Approve sign-ins Sign in

(5) Sophia Mail opens.

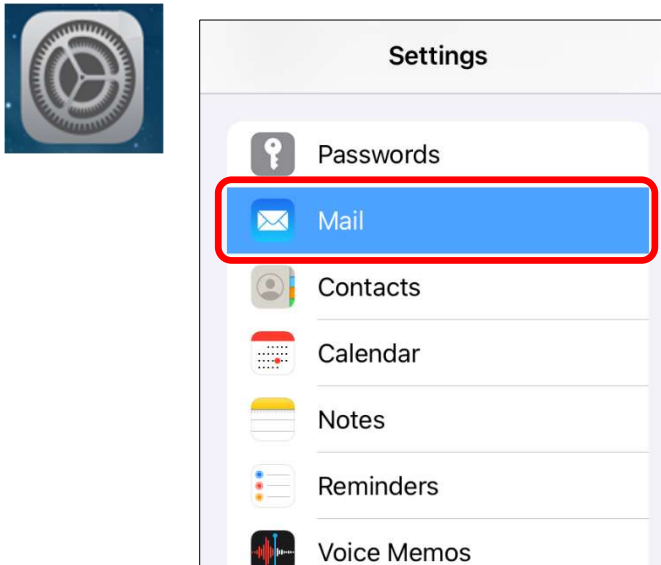


※Tap the icon in the upper left corner or swipe the left edge of the screen to display folders and settings.

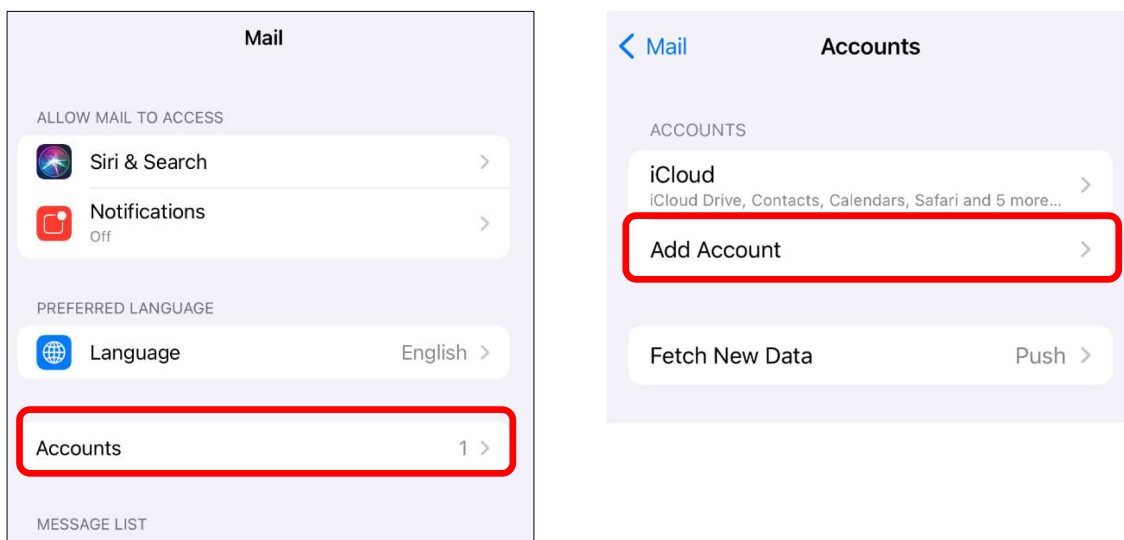


## 2. iPhone/iPad/iPod(iOS15)

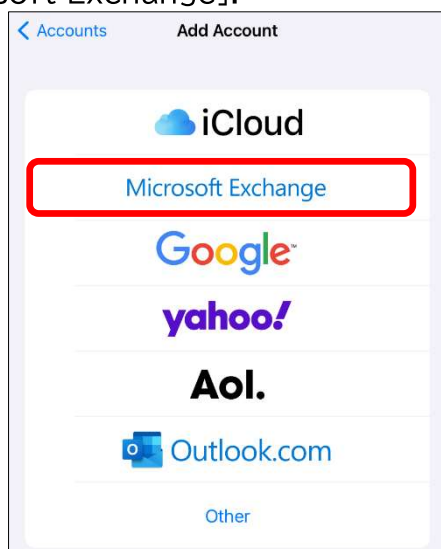
- (1) From [Settings], tap Mail.



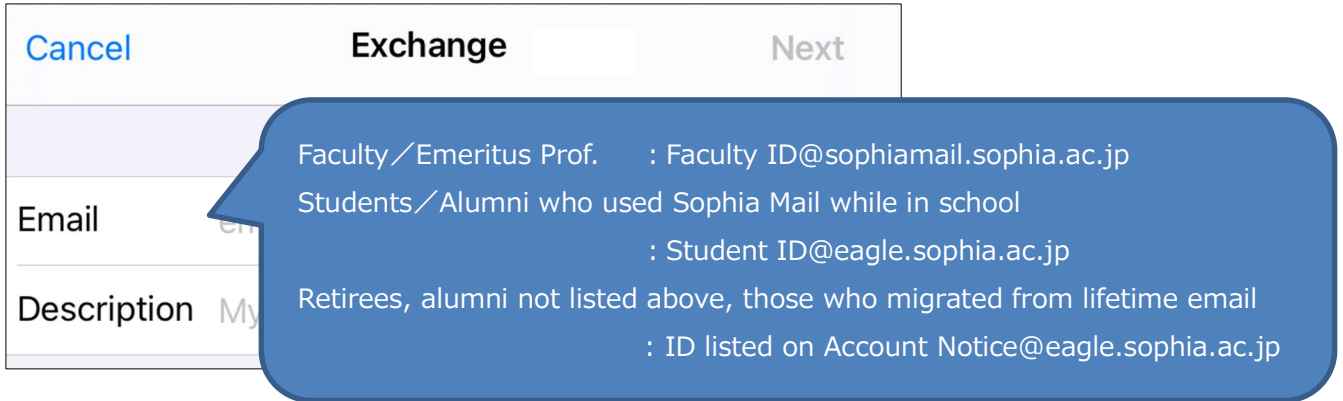
- (2) From [Accounts], tap [Add Account].



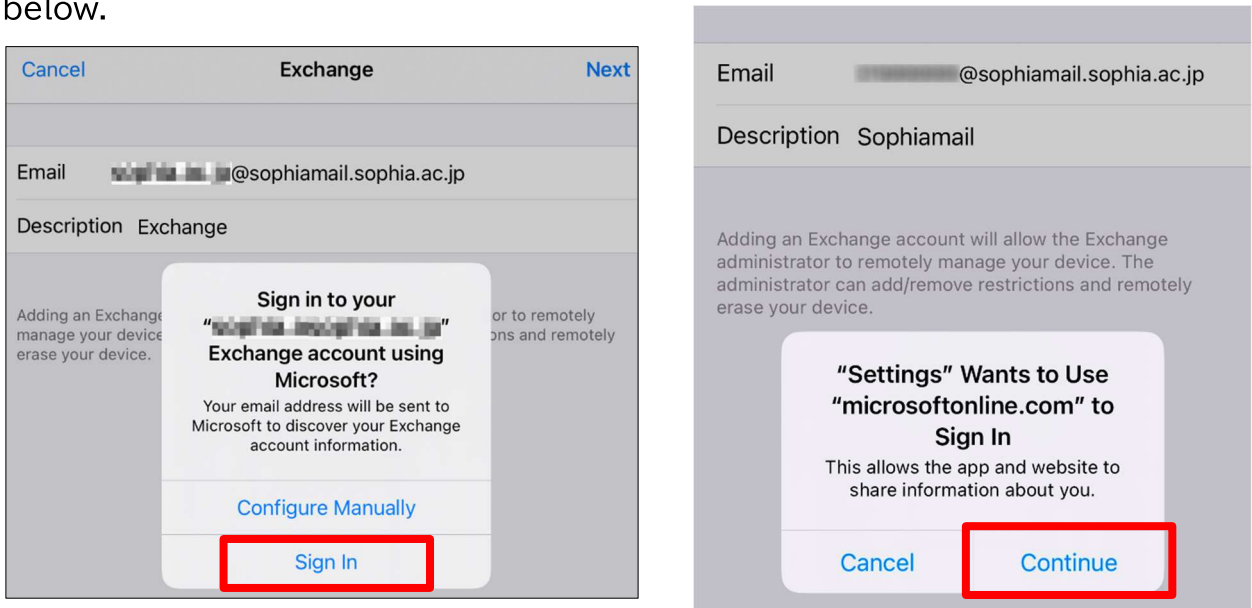
- (3) Tap [Microsoft Exchange].



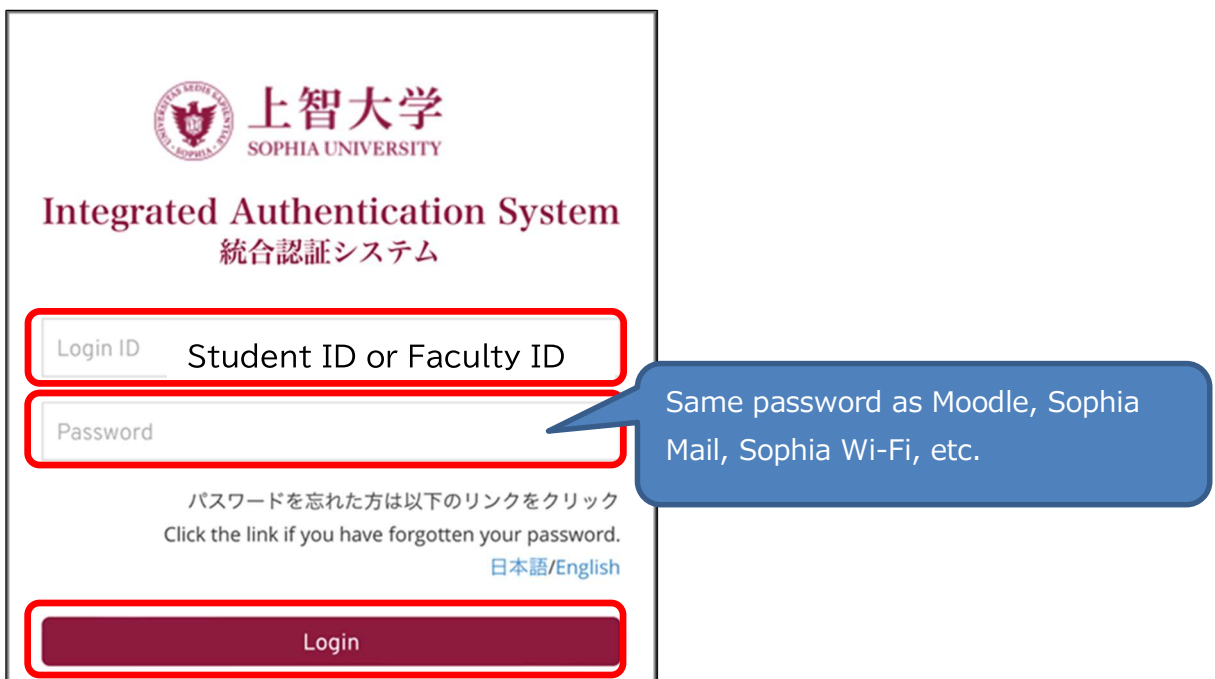
(4) Enter Microsoft Office365 Username and tap Next.



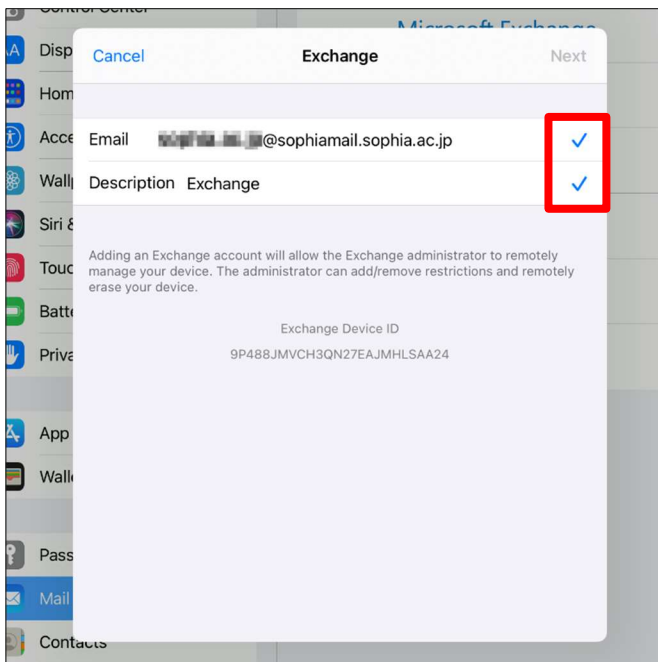
(5) When the pop-up appears, please follow the instructions as shown in the image below.



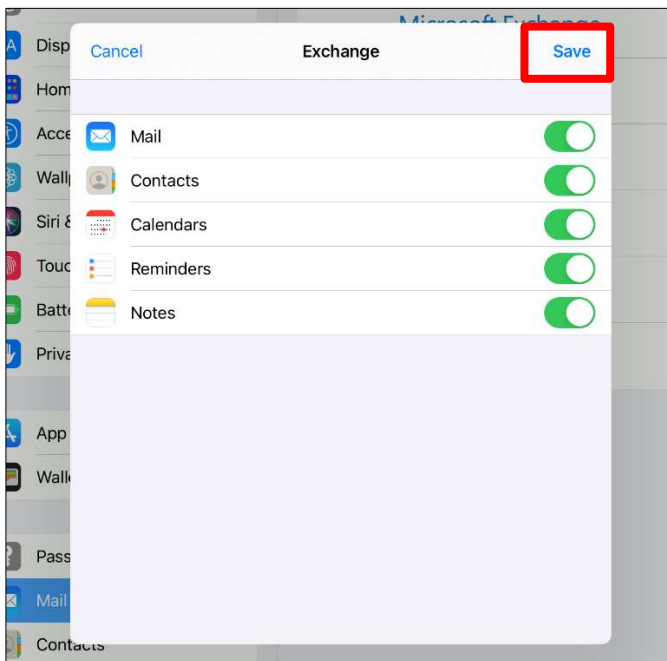
(6) Enter your 'Login ID for system on campus(Student ID or Faculty ID)' and 'password' for Sophia ICT Account, then click [Login] button.



- (7) After authentication passes, it will automatically be returned to the settings screen, where the “Email” and “Description” fields are marked with .

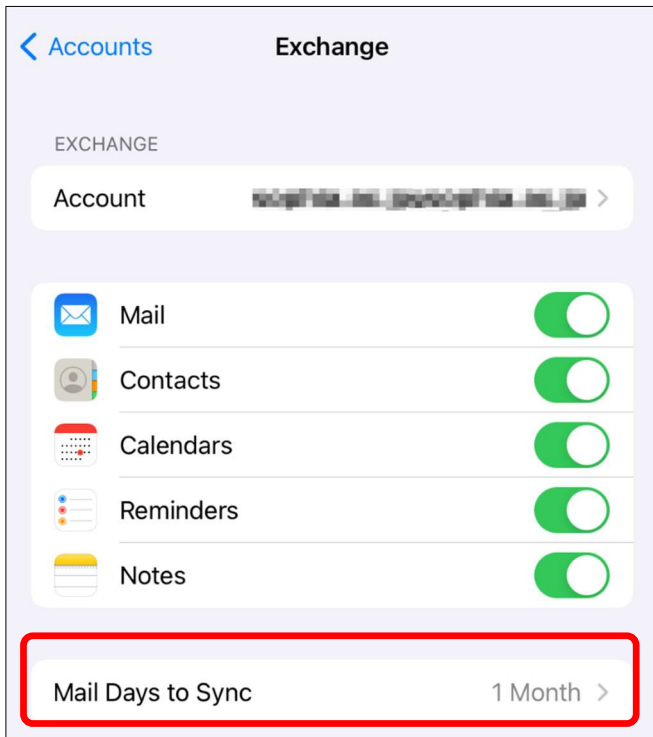


- (8) Tap [Save] to exit the setup.





- (9) By default, the latest one month's worth of emails is synchronized. To change the setting, change the [Mail Days to Sync] setting from the account has been set up.



Sophia Mail  
-Setting Manual for iOS and Android-

Published in Jan. 10, 2016

Revised in Feb. 5, 2018

Revised in Oct. 11, 2022

Revised in Feb.27, 2023

Revised in Sep. 2024

Sophia University ICT Officer  
7-1, Kioi-cho, Chiyoda-ku, Tokyo, 102-8554  
Telephone: 03-3238-3101  
URL: <http://ccweb.cc.sophia.ac.jp>

Sophia ICT

Search