

Instructions for Using Wi-Fi Service

Windows, Mac OS

This document instructs you on how to connect to the campus network (Sophia University network). When you connect to the network, specific settings are required. The settings can be different from ordinary home network settings.

Oct. 2025

ICT Office

Contents

1. Specifications	3
2. How to connect to Sophiawifi2019	4
2.1. Instructions for Windows (set up Sophiawifi2019)	4
2.2. Instructions for Mac OS	10
2.3. Mac OS (Ventura or later) settings	13
3. Changed password or have trouble connecting	14
3.1. For Windows PC	14
3.2. For Mac	15
4. Services	18

OICT Office changed Wi-Fi settings at April, 2019.

Once Wi-Fi setting is completed, you can connect to Sophiawifi at any Wi-Fi spot in this university.

Setting for new Wi-Fi is a little complicated from previous one.
However, once the setting is completed, you can connect to the internet without regular authorization procedure. *

*The authorization will be expired automatically when you graduate/retire/leave this university.

Caution:

Make sure to follow these instructions, or the **connection will fail afterward**. Especially if you use Windows OS, the settings will be completed unintentionally.

When you fail the setting, surely remove the previous setting, and try it again.

1. Specifications

(1) Wi-Fi Coverage

※You can get the latest information from the Sophia University ICT-Office website.

<https://ccweb.cc.sophia.ac.jp/en/userguide/network/nw-05-en/>

(2) Available hours:

Available during school hours. May be temporarily unavailable for maintenance.

(3) Eligibility: Faculty/Staff/Students who have a Sophia University ICT account.

(4) Supported OS: Windows 11, Mac OS, Android, iOS, etc.

Available Services: Web Browsing, E-mail, SSH, SFTP

(5) Notice

- ① You must set up a PC to connect to the network for yourself.
- ② Please be aware of potential viruses. Make sure to install antivirus software and keep its definition files up to date before connecting. Also, ensure that Windows Update has been completed.

- To reduce campus network load, please avoid, as far as possible, using Zoom or watching videos while on campus.
We ask for your cooperation to use the network at home or other off-campus networks unless in compelling situations when you have to take specially approved classes by Zoom while on campus due to class timetable, or when you have to connect to off-campus activities such as job search and interviews while on campus.
- On personal computers or mobile phones, please turn off Wi-Fi settings (sophiawifi2019, eduroam) whenever you are not using them.

2. How to connect to Sophiawifi2019

IEEE802.11a/b/g/n/ac is available. The connection protocol is DHCP.

2.1. Instructions for Windows (set up Sophiawifi2019)

Caution:

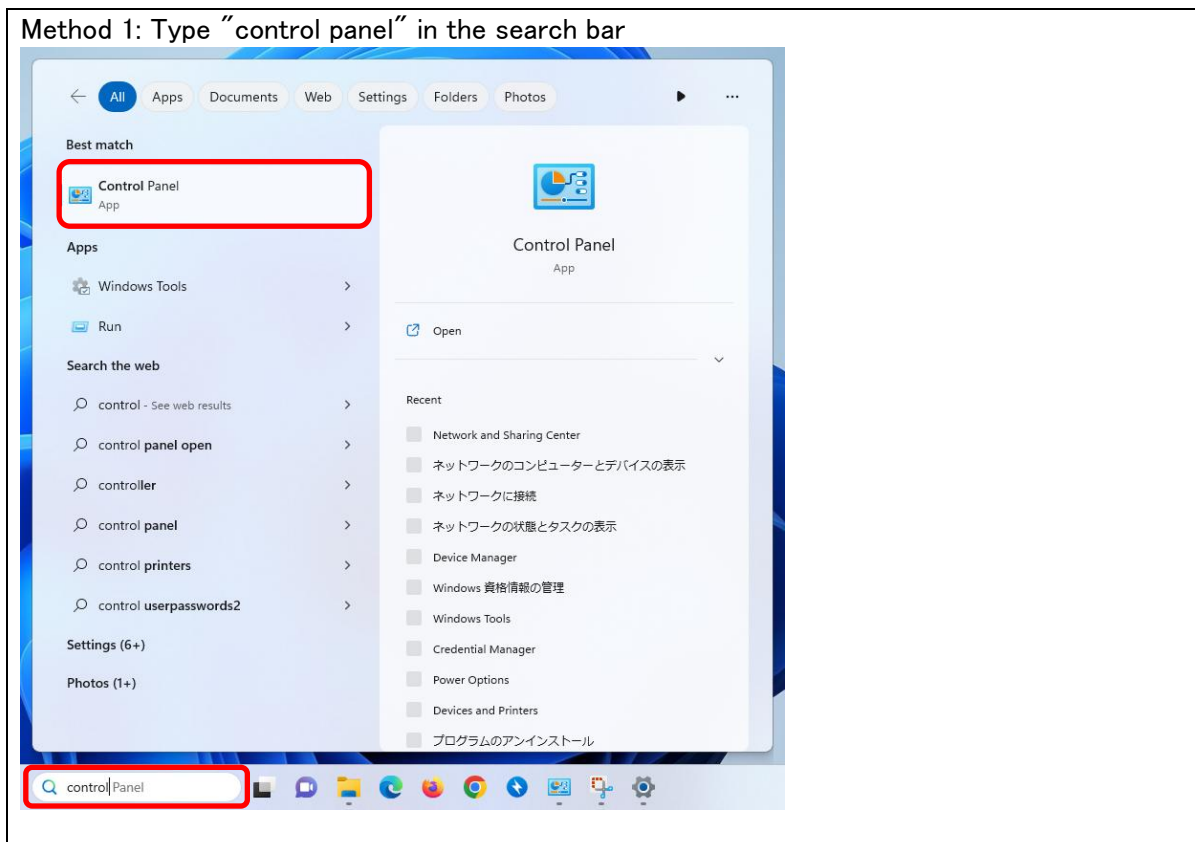
Make sure to follow these instructions, or the connection will fail afterward. Especially if you use Windows OS, the settings will be completed unintentionally.

When you fail the setting, surely remove the setting, and try it again.

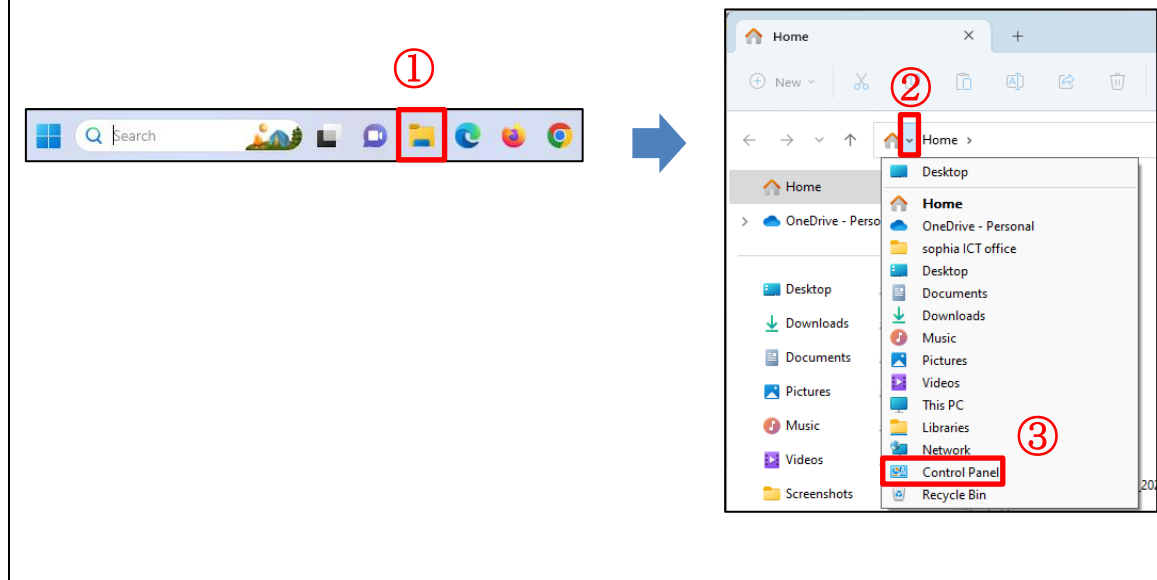
(1) Open “Network and Sharing Center”

1. Open the Control Panel

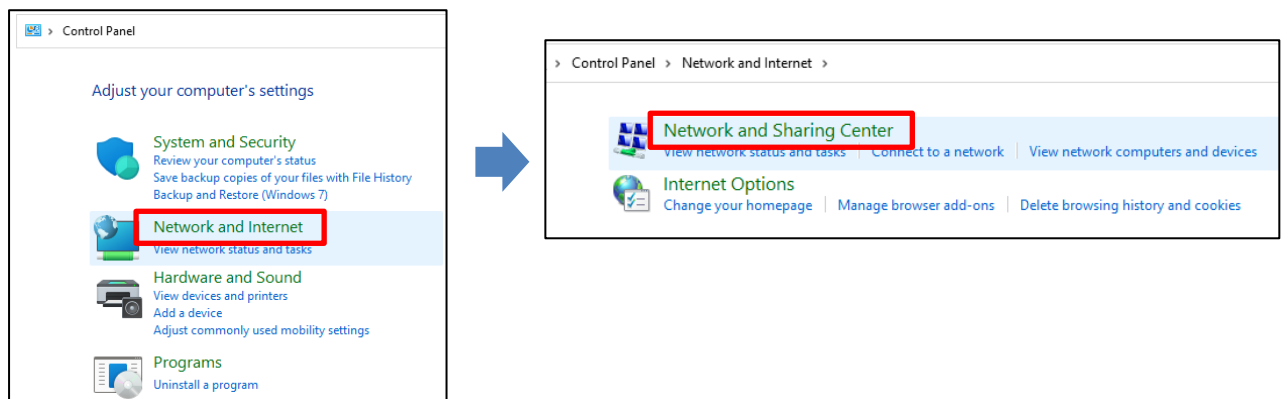
*Below is an example of how to open the control panel.



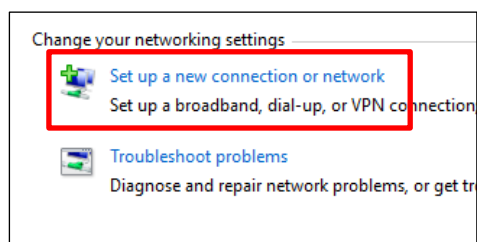
Method 2: Open from Explorer



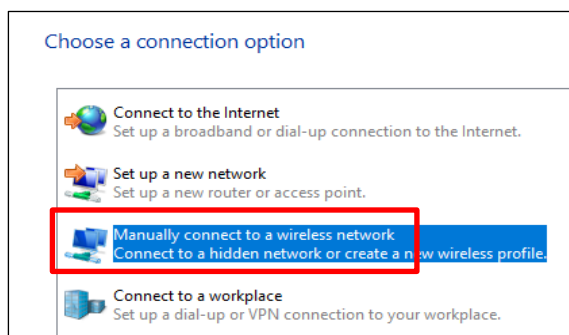
2. [Network and Internet] > [Network and Sharing Center]



- (2) Click “Set up a new connection or network”.



- (3) Select “Manually connect to a wireless network”.



- (4) Apply the following settings and click “Next”.

Manually connect to a wireless network

Enter information for the wireless network you want to add

Network name:

Security type:

Encryption type:

Security Key: ☐ Hide characters

☐ Start this connection automatically

☐ Connect even if the network is not broadcasting

Warning: If you select this option, your computer's privacy might be at risk.

Network name: sophiawifi2019

Security type: WPA2-Enterprise

Disable “Start this connection automatically”.

Disable “Connect even if the network is not broadcasting”.

- (5) Click “Change connection settings”.

Manually connect to a wireless network

Successfully added sophiawifi2019

→ [Change connection settings](#)

Open the connection properties so that I can change the settings.

*To connect to the campus Wi-Fi correctly, you must change the connection settings.

- (6) Select the “Connection” tab and disable “Connect automatically when this network is in range”.

sophiawifi2019 Wireless Network Properties

Connection Security

Name: sophiawifi2019

SSID: sophiawifi2019

Network type: Access point

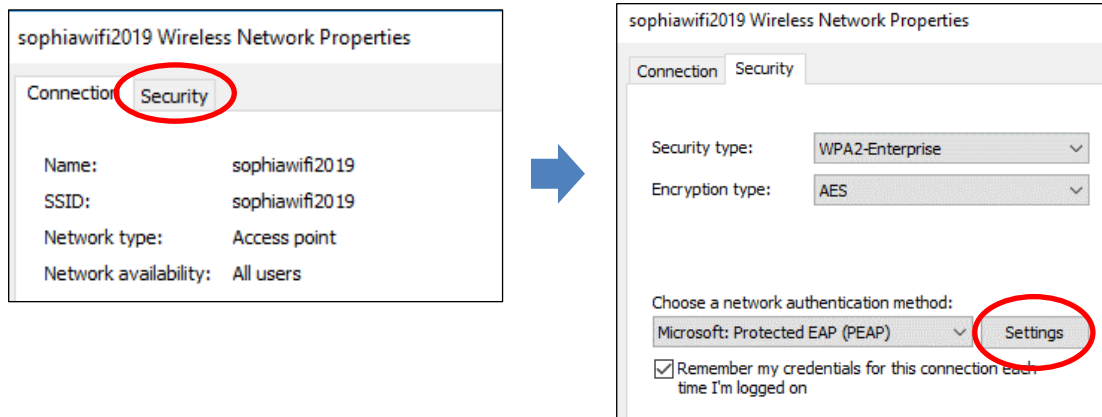
Network availability: All users

☐ Connect automatically when this network is in range

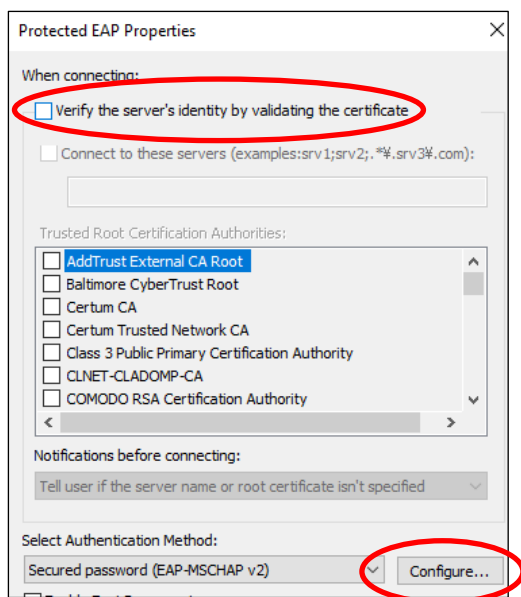
☐ Look for other wireless networks while connected to this network

☐ Connect even if the network is not broadcasting its name (SSID)

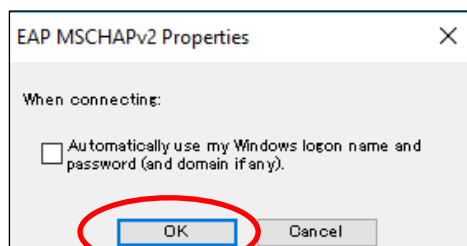
- (7) Select the “Security” tab and click “Settings”.



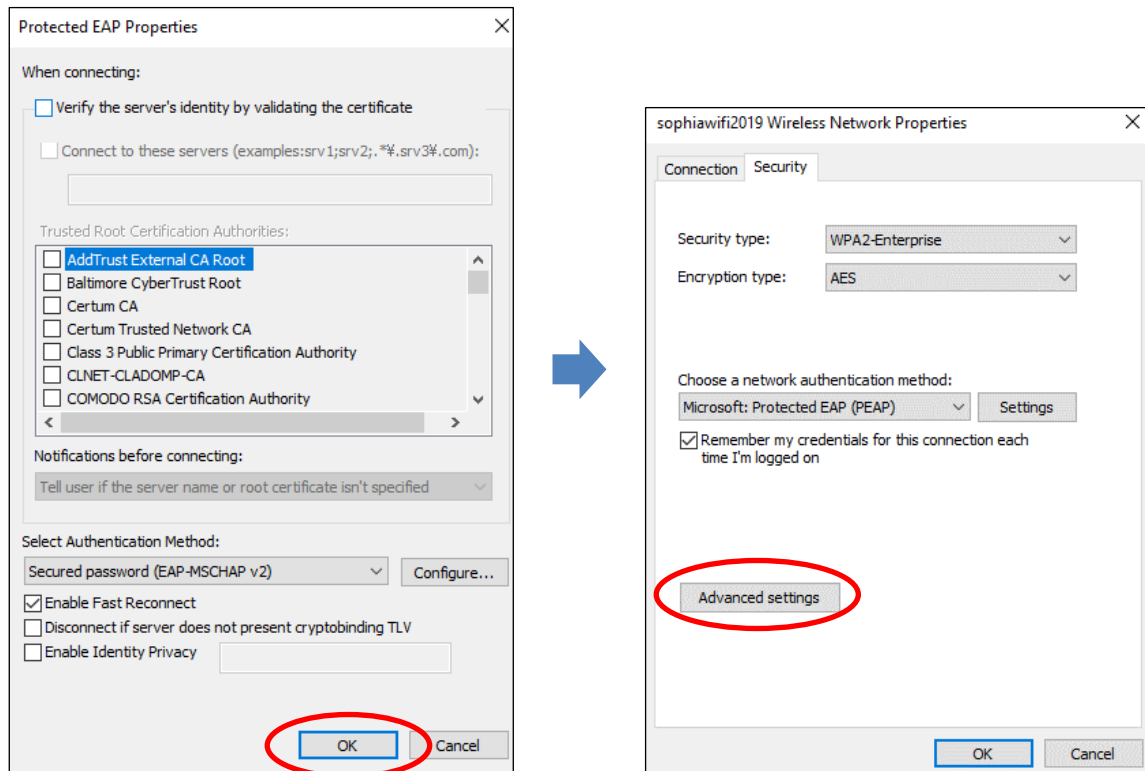
- (8) Disable “Verify the server’s identity by validating the certificate” and click “Configure” at the bottom of the dialog.



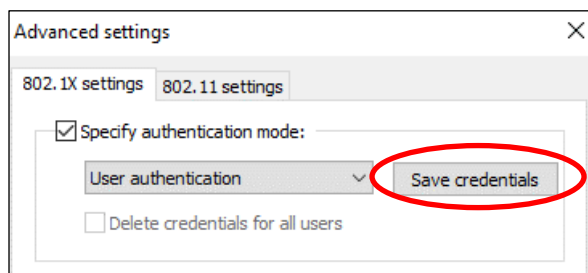
- (9) Disable “Automatically use my Windows logon name and password (and domain if any)” and click “OK”.



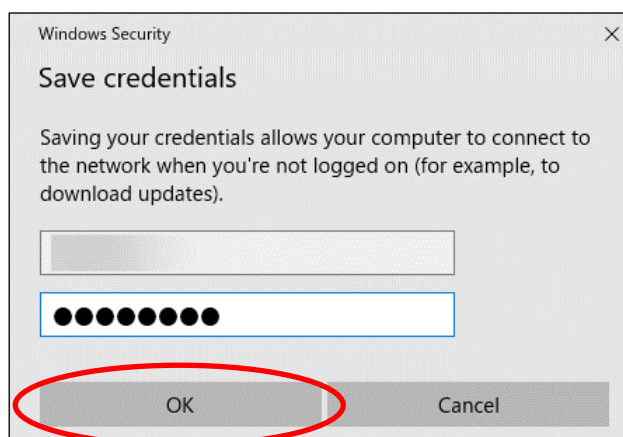
- (10) Click “OK” and “Advanced settings”.



- (11) Enable “Specify authentication mode” and select “User authentication”, then click “Save credentials”.

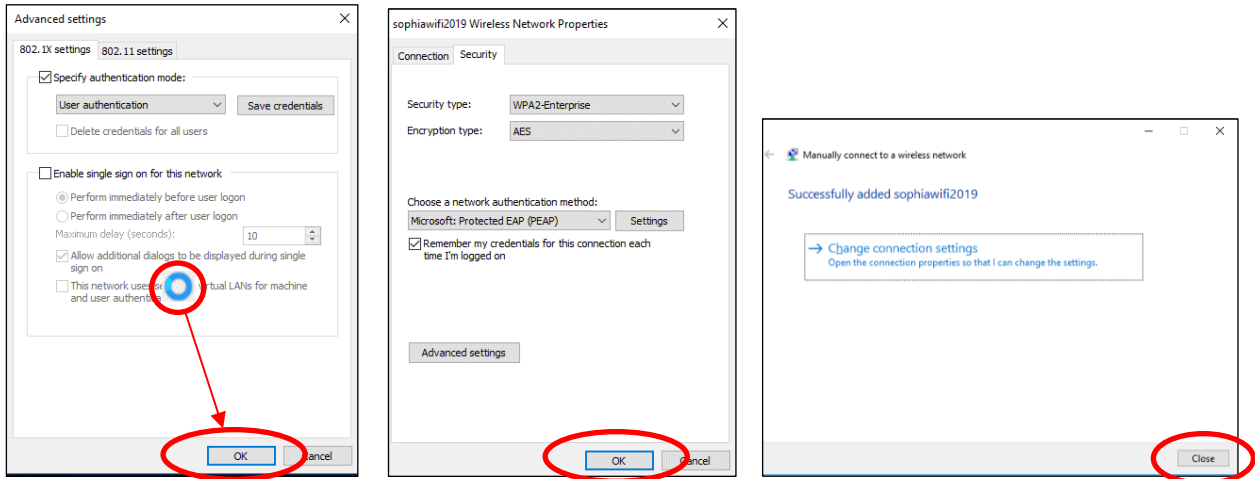


- (12) Input Sophia ICT–Account (faculty/student ID and password) and click “OK”.



- (13) Click “OK” or “Close” and close the setting dialogs.

A loading icon will appear as shown. Click “OK” and “Close” to close the windows.

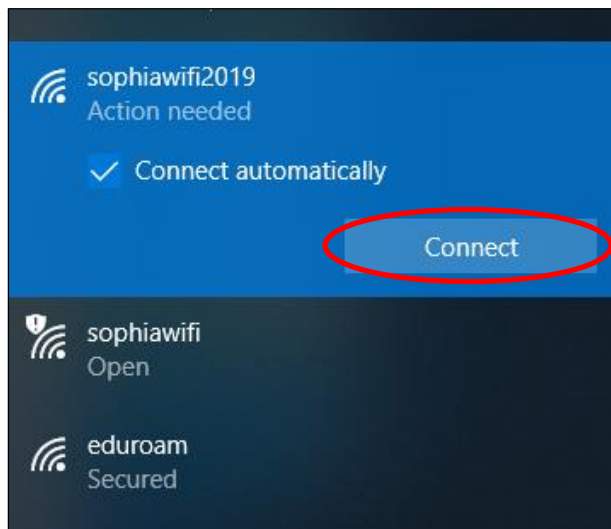


- (14) Click the Wi-Fi icon on the bottom-left of the window.

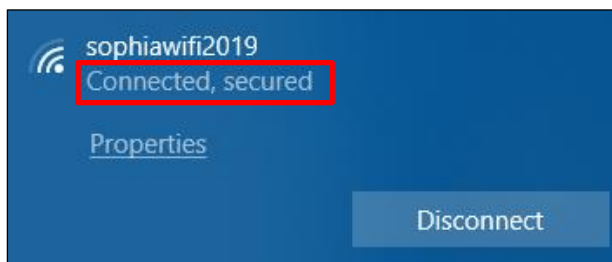
Windows11



- (15) Select “sophiawifi2019” and click “connect”.

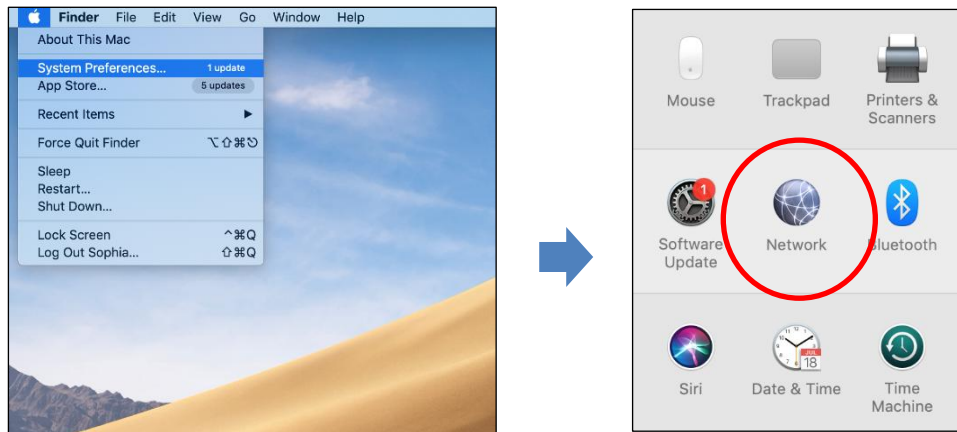


- (16) Wi-Fi connection will be established if you have completed the settings properly.

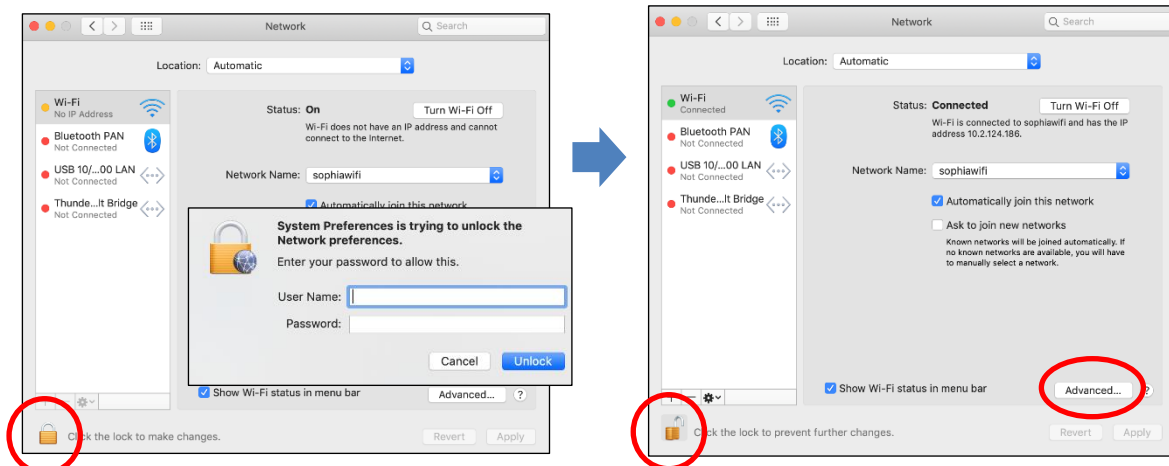


2.2. Instructions for Mac OS

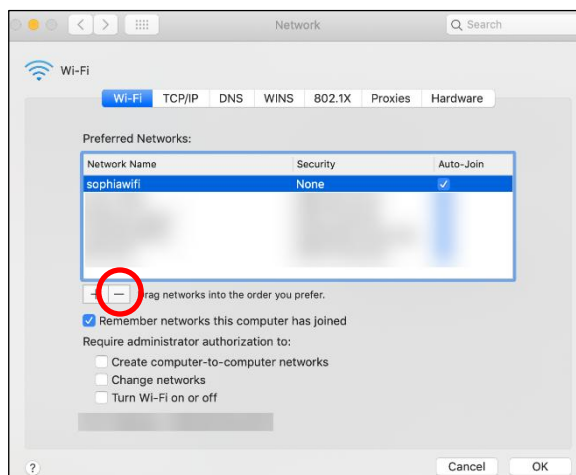
- (1) Select “System Preferences” from the Apple menu and click “Network”.



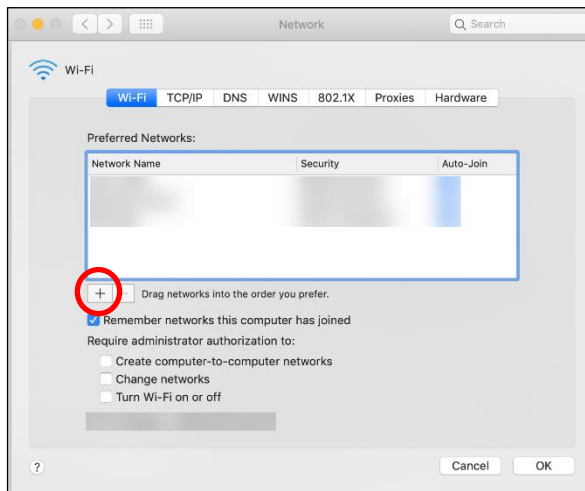
- (2) If preference settings are locked, click the lock icon on the bottom-left of the window. Then, input the administrator's name and password. The settings will be unlocked when you click “Unlock”. Next, click “Advanced”.



- (3) Select “sophiawifi2019” from “Preferred Networks” and click “-”.
If there is no “sophiawifi2019”, skip this procedure.



- (4) Click “+”.

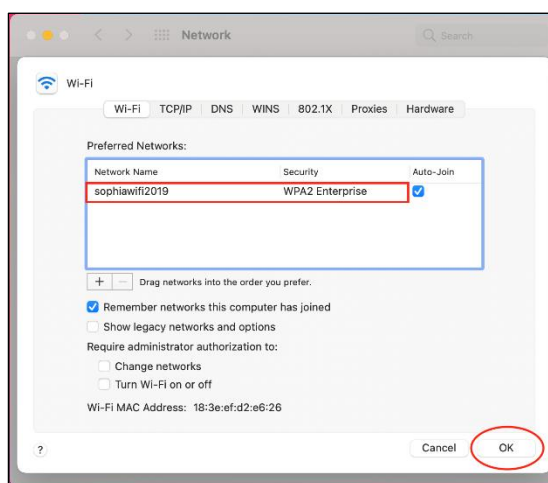


- (5) Input the following information and click “OK”.

Network Name: sophiawifi2019
Security: WPA2 Enterprise
Username: Faculty/Student ID number
Password: Same as login password for Moodle or Sophiamail.

The screenshot shows the 'Add a Wi-Fi network profile' dialog box. The 'Network Name' field contains 'sophiawifi2019', the 'Security' dropdown is set to 'WPA2 Enterprise', the 'Username' field contains 'Faculty/Student ID number', and the 'Password' field contains 'Same as login password for Moodle or Sophiamail'. The 'Show password' checkbox is unchecked. The 'OK' button is circled in red.

- (6) Confirm “sophiawifi2019” is added to “Preferred Networks” and click “OK”.



- (7) If the dialog below appears when you connect to sophiawifi2019 for the first time, confirm the server name is “*.cc.sophia.ac.jp” and click “Continue”.



2.3. Mac OS (Ventura or later) settings

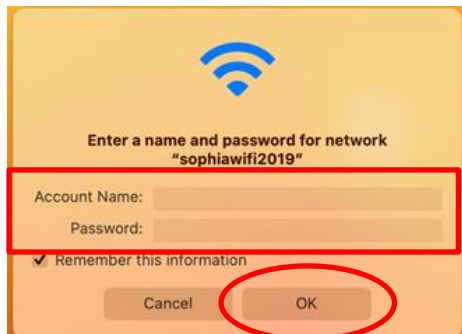
- (1) After clicking on the Wi-Fi icon, click on “sophiawifi2019”.



- (2) Fill in each field as follows and click “OK”.

Account Name : Student ID / Faculty ID

Password : Password used for Moodle and Sophia Mail



- (3) When connecting to sophiawifi2019 for the first time, the following message may appear. Confirm that the server name is “*.cc.sophia.ac.jp” and click “Continue”.

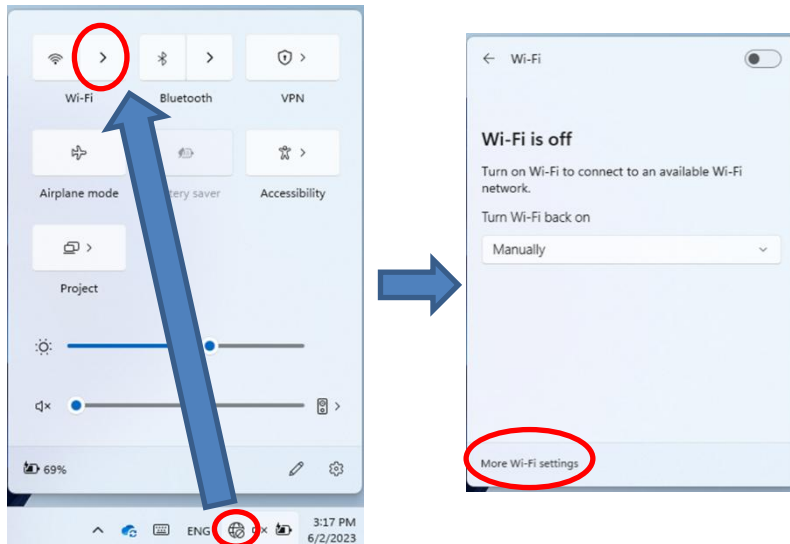


3. Changed password or have trouble connecting

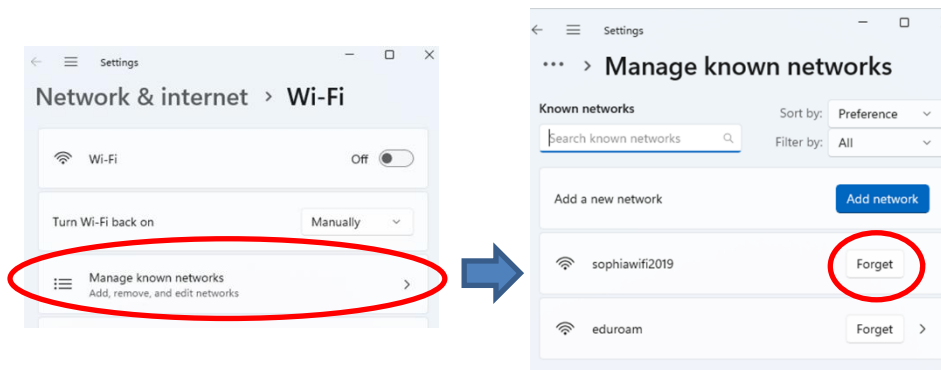
If the connection does not work, or if you have changed the password for Moodle or other Sophia ICT accounts, it is necessary to delete the settings of the sophiawifi2019 and set them up again.

3.1. For Windows PC

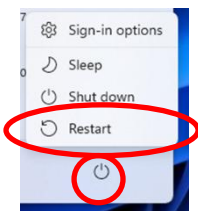
- (1) Open Wi-Fi settings in the following order.



- (2) Remove “sophiawifi2019” from “Manage known networks”.



- (3) Restart the PC and set up the sophiawifi2019 again.

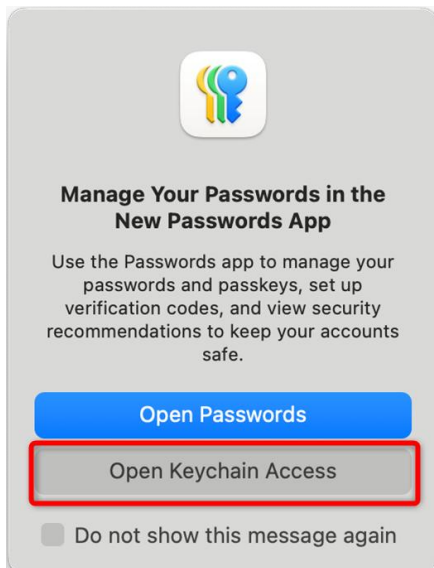


3.2. For Mac

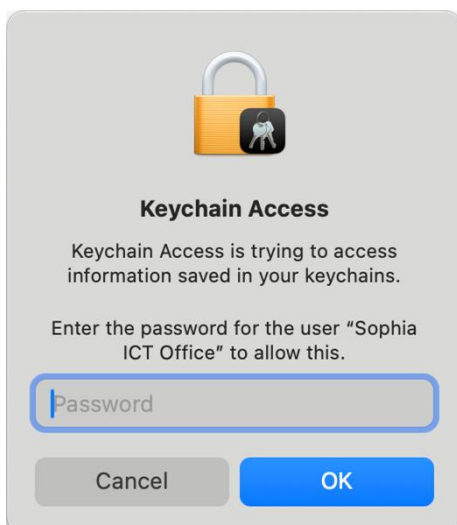
- (1) Remove ID and password information from Keychain Access.



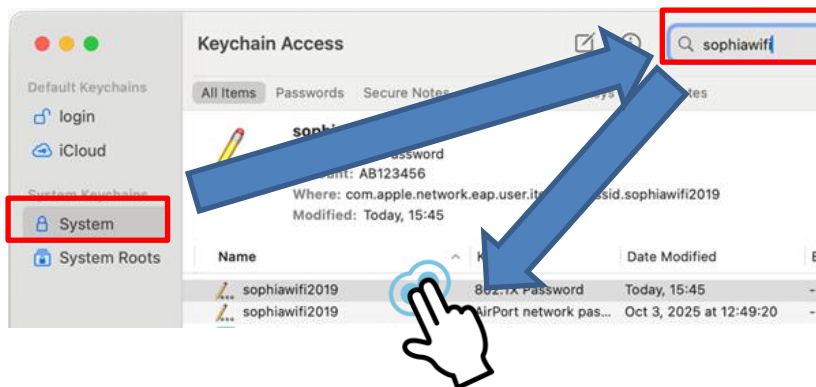
- ① Click the search icon at the top of the screen.
- ② Type「key」in the search bar
- ③ Click「Keychain Access」
- ④ Click 「Open Keychain Access」



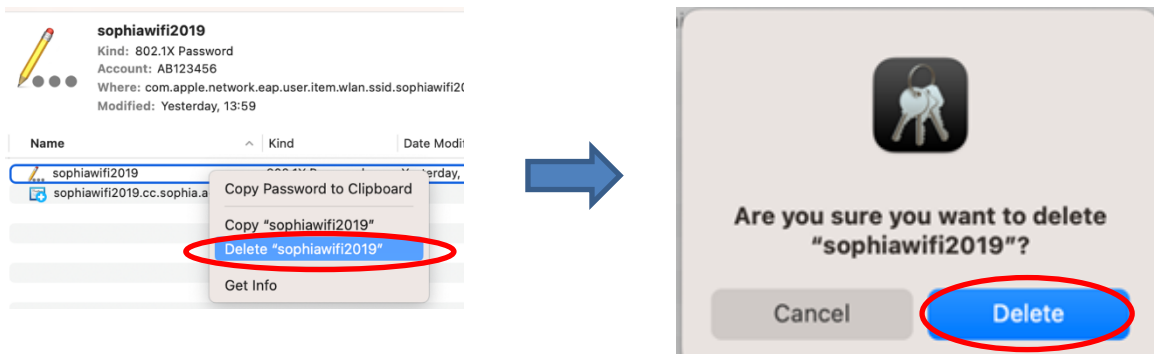
- ⑤ Enter your password to log in to the PC, and click [OK]



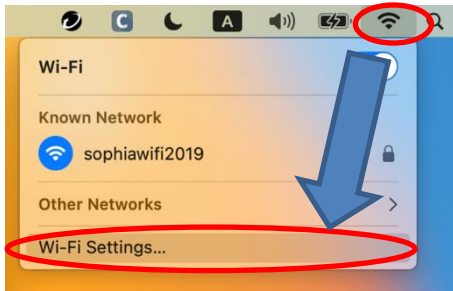
- ⑥ After clicking [system], type “sophiawifi” in the search bar and click “sophiawifi2019” with two fingers. (If it does not appear, proceed to (2).



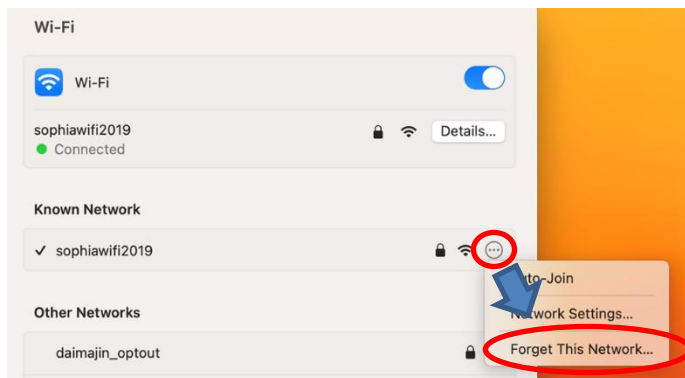
- ⑦ Select “Delete sophiawifi2019” and click “Delete” when it pops up. Confirm that “sophiawifi2019” has been deleted and close the Keychain Access.



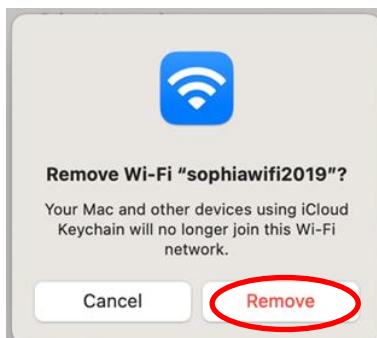
- (2) Delete sophiawifi2019 settings.
- ① Click on the Wi-Fi icon > Click on “Wi-Fi Settings”.



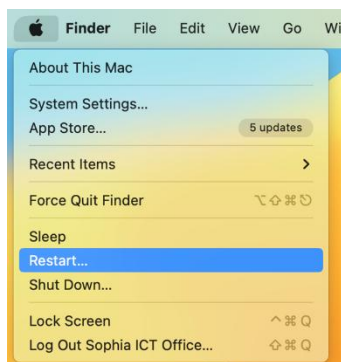
- ② Click “...” next to “sophiawifi2019” and select “Forget This Network...”



- ③ Click “Remove” when the following pop-up appears.



- ④ Please reboot and set up the sophiawifi2019 again.



4. Services

(1) Web Browsing

- ① You can connect to the Internet through a web browser after the Wi-Fi connection is established.

(2) E-mail

- ① You can use Sophiamail, such as “@sophia.ac.jp” or “@eagle.sophia.ac.jp” via OWA (Outlook Web App). Open the Sophia University ICT-Office website [<http://ccweb.cc.sophia.ac.jp>] and click the “Microsoft 365 Login” button for faculty or students. Then, input your username and password. The email traffic will be encrypted by SSL.
- ② You can use a third-party mailing service by using an email client. Only encryption protocols such as “Exchange”, “POPS”, or “IMAPS” are available in that case.

(3) On-demand Printer

- ① You can use an on-demand printer via sophiawifi2019. Refer Instructions for the printer and apply additional settings for it.

(4) Restrictions

- ① External network traffic will be blocked except for web-browsing, email, NTP, and DNS.
- ② Internal network traffic will be disabled except for the services permitted by the ICT-Office.

IMPORTANT:

Specific network protocols such as SSH are disabled on sophiawifi2019. Therefore, when you want to access to servers in researching room, connect to eduroam and use Tunneling protocols via VPN connection.

CAUTION

Beware of security problems and use Wi-Fi services at your own risk.

Instructions for Using Wi-Fi Service Windows, Mac OS

Nov 2015	creating new document.
Jan 2016	updated
Sep 2016	updated
Jan 2018	updated
Mar 2019	updated
Mar 2021	updated
May 2022	updated
Apr 2023	updated
Jun 2023	updated
Apr 2024	updated
Oct 2025	updated

Author Sophia University ICT-Office
Address 102-8554
Kioicho 7-1, Chiyoda-ku, Tokyo-to, Japan.
Phone 03(3238)3101
Website <http://ccweb.cc.sophia.ac.jp/>

Sophia ICT

Search

