

Logging into the Integrated Authentication System

January 2026

ICT Office

Contents

| | |
|---|----|
| 1. How to enable MFA for the Integrated Authentication System | 3 |
| 2. Preparation | 4 |
| 3. Login Procedure | 4 |
| 3.1. For the First Login | 4 |
| 3.2. After the First Time | 8 |
| 4. Other | 10 |

At Sophia University, system logins are conducted via an integrated authentication system (Single Sign-On, hereafter referred to as SSO) that incorporates multi-factor authentication. Multi-factor authentication enhances security by requiring additional authentication information beyond just an ID and password. It is necessary when accessing internal systems from external networks.

Note: Multi-factor authentication is not required when using the campus network (such as sophiawifi2019).

As of January 2026, the systems that use the Integrated Authentication System include:

- Loyola
- My Sophia
- Sophia Mail
- Moodle
- VPN
- Mailing List System
- Self-Learning Portfolio
- CaLabo MX
- My OPAC (Library OPAC)
- Zoom
- Certificate Issuance System
- Career Center System

1. How to enable MFA for the Integrated Authentication System

Starting August 29, 2025, multi-factor authentication (MFA) has been implemented for logging into the Integrated Authentication System (Single Sign-On/SSO).

Multi-factor authentication enhances security by requiring additional authentication information beyond just an ID and password.

While the use of MFA is optional at the time of introduction, it is scheduled to become mandatory early in the Fall semester as part of our efforts to enhance information security.

The procedure for enabling multi-factor authentication is outlined below.

For instructions on how to log in using MFA after it has been configured, please refer to the section titled "Logging into the Integrated Authentication System".

- (1) Log in to the Integrated Authentication System (<https://sso.sophia.ac.jp>).
- (2) Click [Multi-Factor Authentication] Icon.



- (3) Check the box labeled [Enable Multi-Factor Authentication]. Ensure that "Authenticator" is selected as the authentication method, then click [Save].



2. Preparation

To log in to the integrated authentication system, a smartphone is required.

If you do not have a smartphone, please contact the ICT Office.

Please install the “Microsoft Authenticator” on your smartphone:



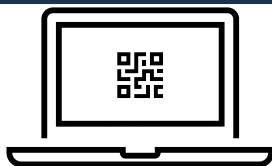
3. Login Procedure

3.1. For the First Login

Here are the steps for logging into the unified authentication system for the first time after multi-factor authentication has been introduced.

For the initial setup, both a PC (to display the QR code) and a smartphone (to scan the QR code) must be prepared, as the QR code displayed on the screen needs to be scanned.

Required Items



Device to display the QR code

(e.g., PC)



Device to scan the QR code

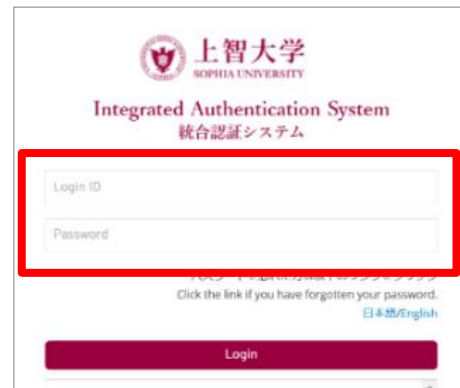
(e.g., smartphone)

※As scanning the QR code is required, separate devices must be prepared for displaying and scanning.

- ① Access the ICT Office website at <https://ccweb.cc.sophia.ac.jp/en/> and click the system icon to log in. Loyola is used as an example here, but the process is the same for all systems.



- ② The integrated authentication login screen will appear. Enter your ID (faculty/staff number) and Sophia ICT account password.



- ③ A QR code will be displayed. At this point, DO NOT scan the QR code with your smartphone's camera app.

※The QR code is shown only during the first login. From the second login onward. Please refer to page 4. Section “2-2. After the First Time.

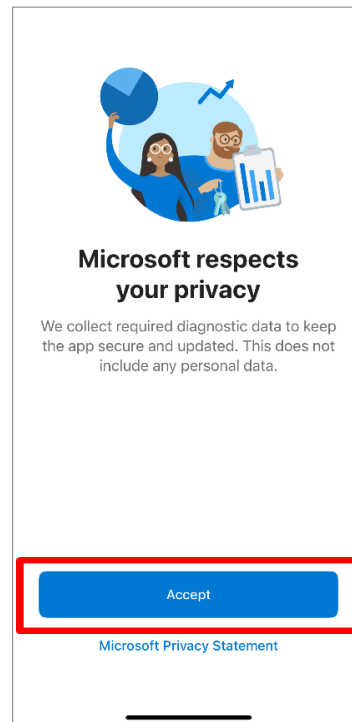
※In case you have uninstalled “Microsoft Authenticator” after setting up multi-factor authentication and need to reconfigure it, please see section 3 “Other” on page 4.



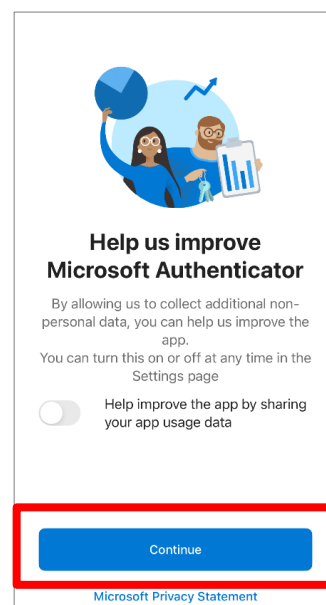
- ④ Launch the “Authenticator” app on your smartphone.



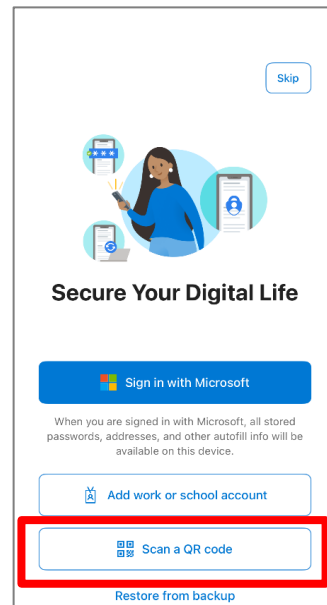
- ⑤ When the app opens, tap “Accept” on the screen.



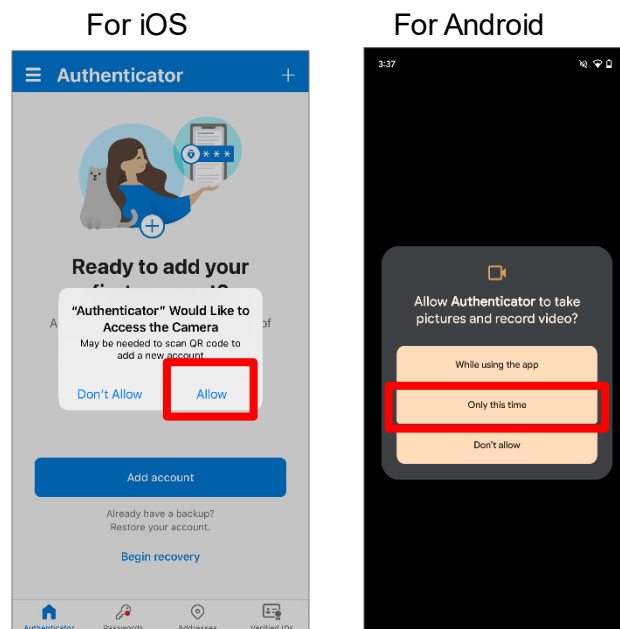
- ⑥ Tap “Continue”.



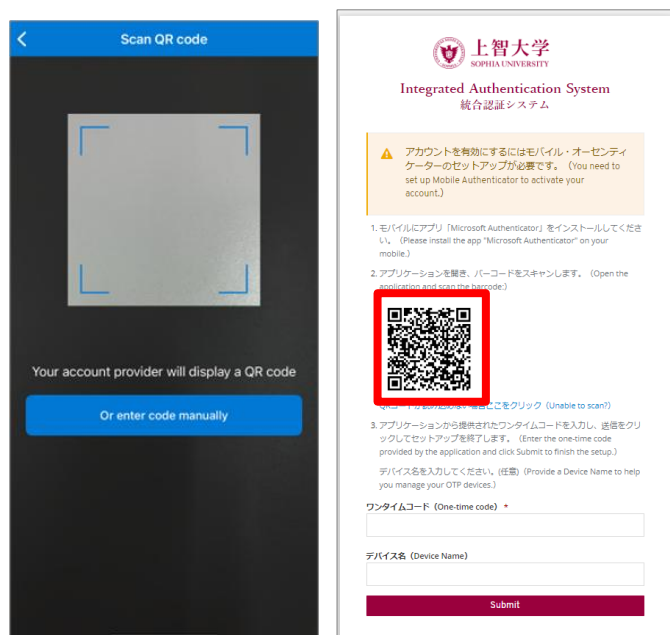
- ⑦ Tap “Scan a QR Code”.



- ⑧ A message will appear asking for camera access. Select “Allow” or “Only this time”.

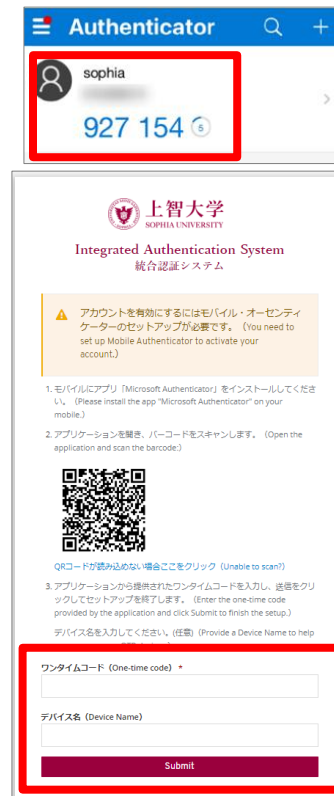


- ⑨ The QR code scanning screen will appear. Scan the QR code displayed on the Integrated Authentication System.

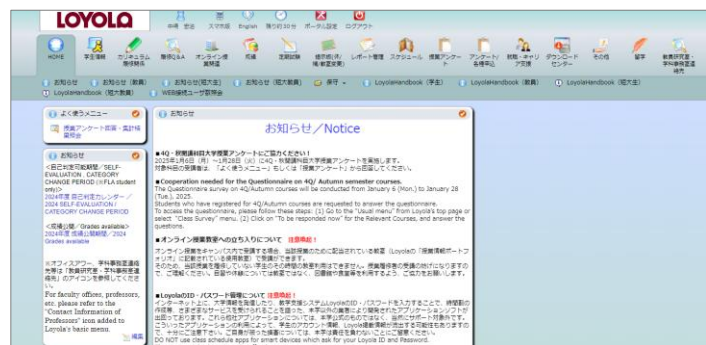


- ⑩ Once the QR code is scanned, a one-time code will appear under the “sophia” entry in the Microsoft Authenticator app. Enter this code in the “One-time code” field and tap “Submit”. Entering a device’s name is optional.

***No space between the two three-digit groups.**



- ⑪ Authentication is complete, and you will be logged into the system.



3.2. After the First Time

Here are the login steps for subsequent access.

- ① Access the ICT Office website at <https://ccweb.cc.sophia.ac.jp/en/> and click the system icon to log in. Loyola is used as an example here, but the process is the same for all systems.



-
- 上智大学
SOPHIA UNIVERSITY
- Integrated Authentication System
統合認証システム
- Login ID
- Password
- パスワードを忘れた方は以下のリンクをクリック
Click the link if you have forgotten your password.
[日本語/English](#)
- Login

- The screenshot shows the login page of the Integrated Authentication System at Sophia University. At the top center is the Sophia University logo, which consists of a circular emblem with a shield and cross inside, surrounded by the text 'SOPHIA UNIVERSITY' and 'FUND. 1873'. To the right of the emblem, the university's name is written in large blue Japanese characters '上智大学' and smaller blue English characters 'SOPHIA UNIVERSITY'. Below this, the title 'Integrated Authentication System' is displayed in a large, bold, black serif font, followed by '統合認証システム' in a smaller, bold, black sans-serif font. Underneath the title is a label 'ワンタイムコード (One-time code)' in a black sans-serif font, positioned above a large, empty rectangular input box with a thin black border. At the bottom of the page is a solid blue rectangular button with the word 'Login' written in white sans-serif font. Below the button, a note in red sans-serif font states: '※ログインができない場合は管理者にお問い合わせください。' (If you cannot log in, please contact the administrator.)

- 

- [illegible]

4. Other

- If you have changed your smartphone model or uninstalled “Microsoft Authenticator” after setting up multi-factor authentication and need to scan the QR code again, please contact ict-support@sophia.ac.jp.

We will reset your settings so that the QR code can be displayed again.

- If you do not have a smartphone, please contact the ICT Office by email.
- Regarding Multi-Factor Authentication applications other than Microsoft Authenticator, while the ICT Office does not provide support for them, you are free to use them (e.g., Google Authenticator, Duo Mobile).

However, please note that any issues that arise during initial setup or use must be resolved by the user.

Logging into the Integrated Authentication System

August 2025 Created a new document.

September 2025 Revised.

November 2025 Revised.

December 2025 Revised.

December 2026 Revised.

January 2026 Revised

Author Sophia University ICT-Office
Address 102-8554
 Kioicho 7-1, Chiyoda-ku, Tokyo-to, Japan.
Phone 03(3238)3101
Website <http://ccweb.cc.sophia.ac.jp/>

Sophia ICT

Search

